

# B4.2 Install & Operation Manual

We're online. Chat with us now!



# Model Overview

## Introduction

A range of compact water dispensers, available in the following operational types:

- Direct Chill Chilled & Ambient (Low-Pressure Tank System)
- Direct Chill Chilled, Ambient & Hot (Low-Pressure Tank System)
- Direct Chill Chilled & Ambient
- Direct Chill Chilled, Ambient & Hot
- Direct Chill Chilled, Ambient & Sparkling
- Direct Chill Chilled, Hot & Sparkling

The B4 model is available as a countertop with a matching base cabinet in three colours.

### All Models

All models are self-contained machines with robust steel framed cabinets and attractively injection moulded plastic front, side and top panels. An IEC Power Lead is supplied for connection to the IEC socket located at the rear of all models (An additional Schuko type is supplied for the European market).

### Chilled

Water is fed into the insulated cold tank under mains pressure. We strongly recommend a Pressure Reducing Valve is fitted to all supplies to regulate the pressure to 3.5 bar/355 KPat. The cold tank is chilled via the evaporation coil of the capillary controlled refrigeration compression system. The cold temperature is thermostatically controlled via the adjustment screw on the cold thermostat. This is factory set and it is not necessary to adjust in most cases ([see Controls](#)).

### Ambient

Water bypasses the cold tank for the ambient dispense.

### Sparkling

Water is chilled as it passes through the Direct Chill coil. It is pumped under pressure into the carbonator which is fitted within the Direct Chill coil. The carbonator is also level controlled. The Deep Sparkle effect occurs through saturation with CO<sub>2</sub>.

All models also incorporate a leak detection device within the unit which disables the dispense function until rectified.

### Hot

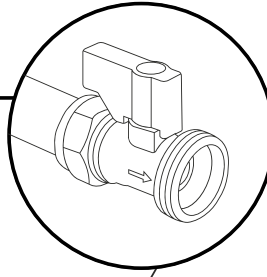
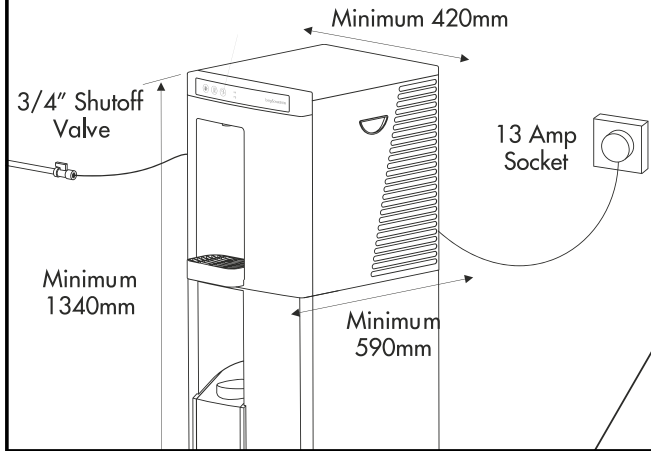
Hot water is provided by a hot water tank with an integrated heater element. The water is supplied directly into the tank under the pressure as connected into the back of the unit. The water fills the tank and hot water is dispensed by displacement. The water flow is controlled by a solenoid.

### Direct Chill

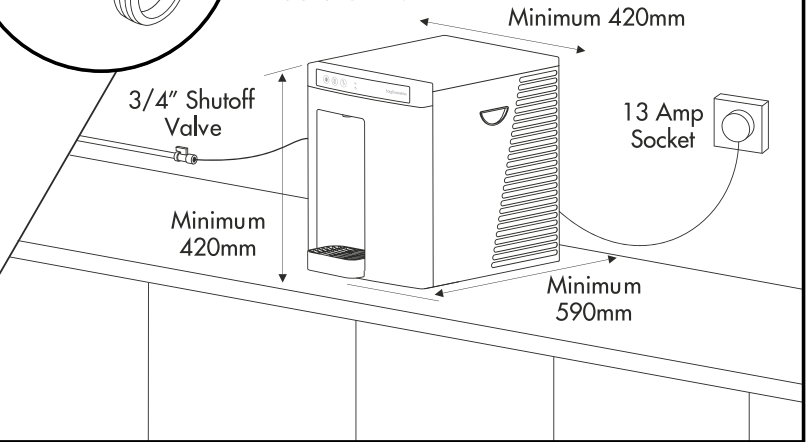
Borg & Overström Direct Chill utilises innovative technology to chill water instantly. We recommend this system for more demanding environments because of its optimum dispense performance and unrivalled hygienic qualities. Superior to the gravity fed Reservoir system, Direct Chill technology chills water on demand for the ultimate drinking experience.

## Before installation

Allow adequate space to install the appliance.  
Ensure the services are in place prior to installation.



Water supply - 3/4" BSP Shutoff valve .  
Engineer to connect reducing fittings to suit installation kit.

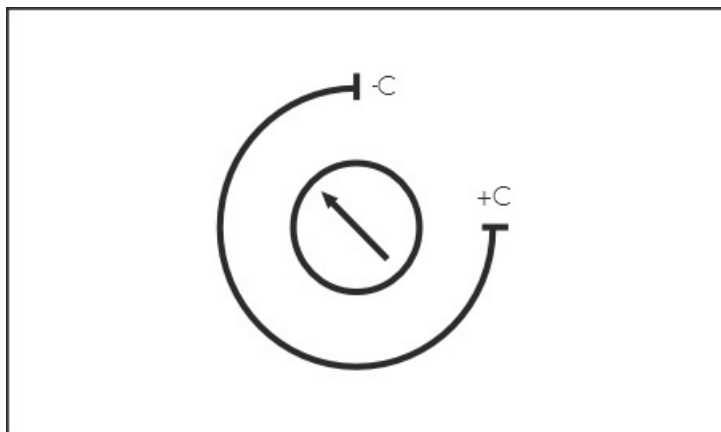


Allow adequate space to install the appliance.  
Ensure the services are in place prior to installation.

Water supply – 3/4" BSP Shutoff valve.  
Engineer to connect reducing fittings to suit installation kit.

# Controls

## Cold Thermostat



This shows the correct and factory default set point. Although adjustment is possible (clockwise reduces the temperature and anti-clockwise increases the water temperature), this correct default setting is to ensure optimum performance and reliability. Unauthorised alternative settings could cause technical issues and invalidate the warranty.

### Chilled

Chilled On/Off Switch: at upper rear of machine, switches cooling operation on/off.\*

Cold Thermostat: at rear of machine.

Chilled Button: Press to dispense cold water.

Chilled LED: Indicates chilling application is switched on.

10A Fuse: On rear of machine, integral with IEC socket.

\*All Direct Chill variants incorporate an auto-fill system

### Ambient

Ambient Button: Press to dispense ambient water.

### Sparkling

Carbonation On/Off switch: Switches sparkling operation on/off.

Sparkling Button: Press to dispense sparkling water.

Sparkling LED: Indicates sparkling application is switched on.

### Hot

Hot On/Off Switch: The hot water heating mode is controlled by a switch on the back of the unit, next to the cooling mode switch.

Hot Thermostat: regulated by a pre-set, non-adjustable sensor on the tank.

Hot Button (incorporates safety lock): Press once to unlock. Press again to dispense hot water. (Note: Machine will revert to locked after 5 seconds if dispense is not activated.)

Hot LED: Indicates hot application is switched on.

## Floorstanding Version

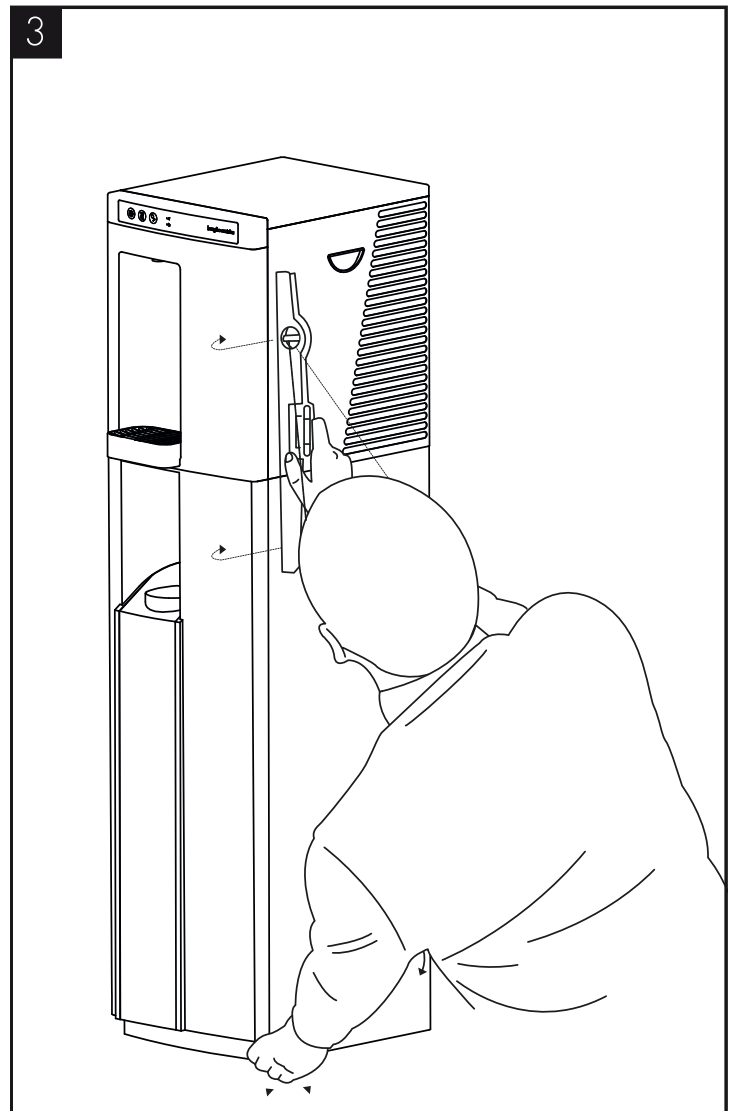
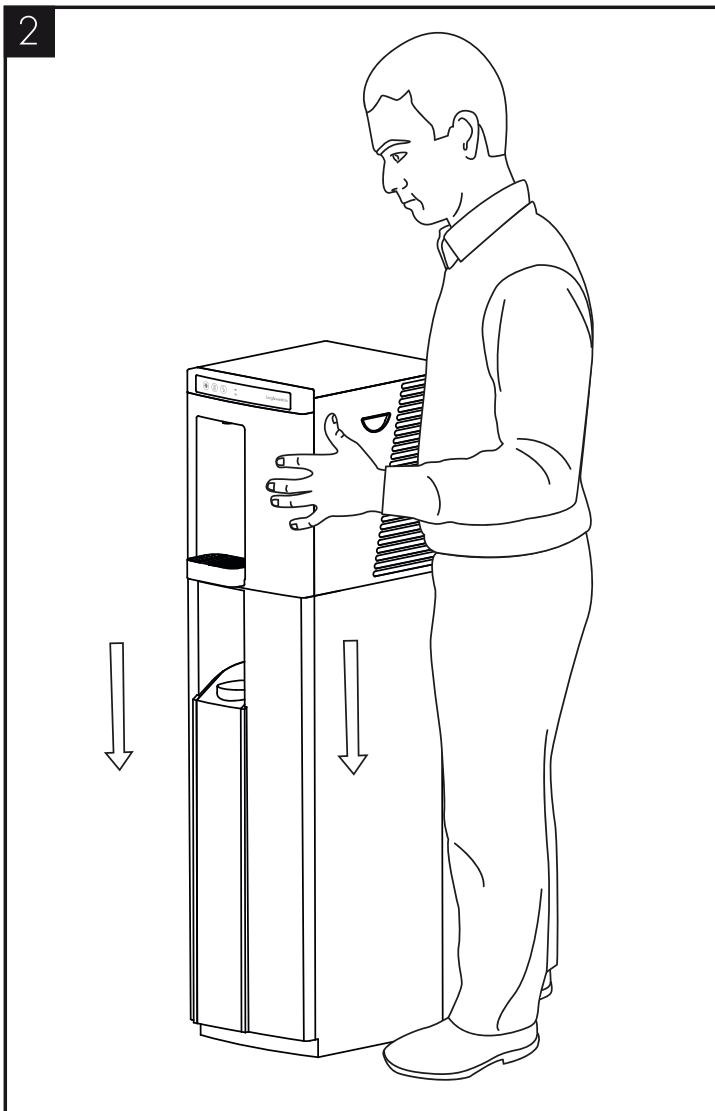
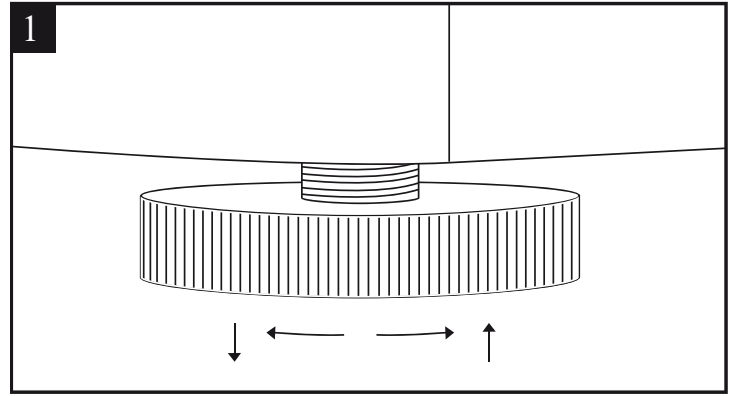
All models are designed to fit straight onto the top of the base cabinet to create a floorstanding model.

Ensure the feet are in the nesting positions.

The Door Panel is hinged and fastened with Magnetic Catches. The cabinet can be levelled using the adjustable feet. Service entry is at the back of the machine.

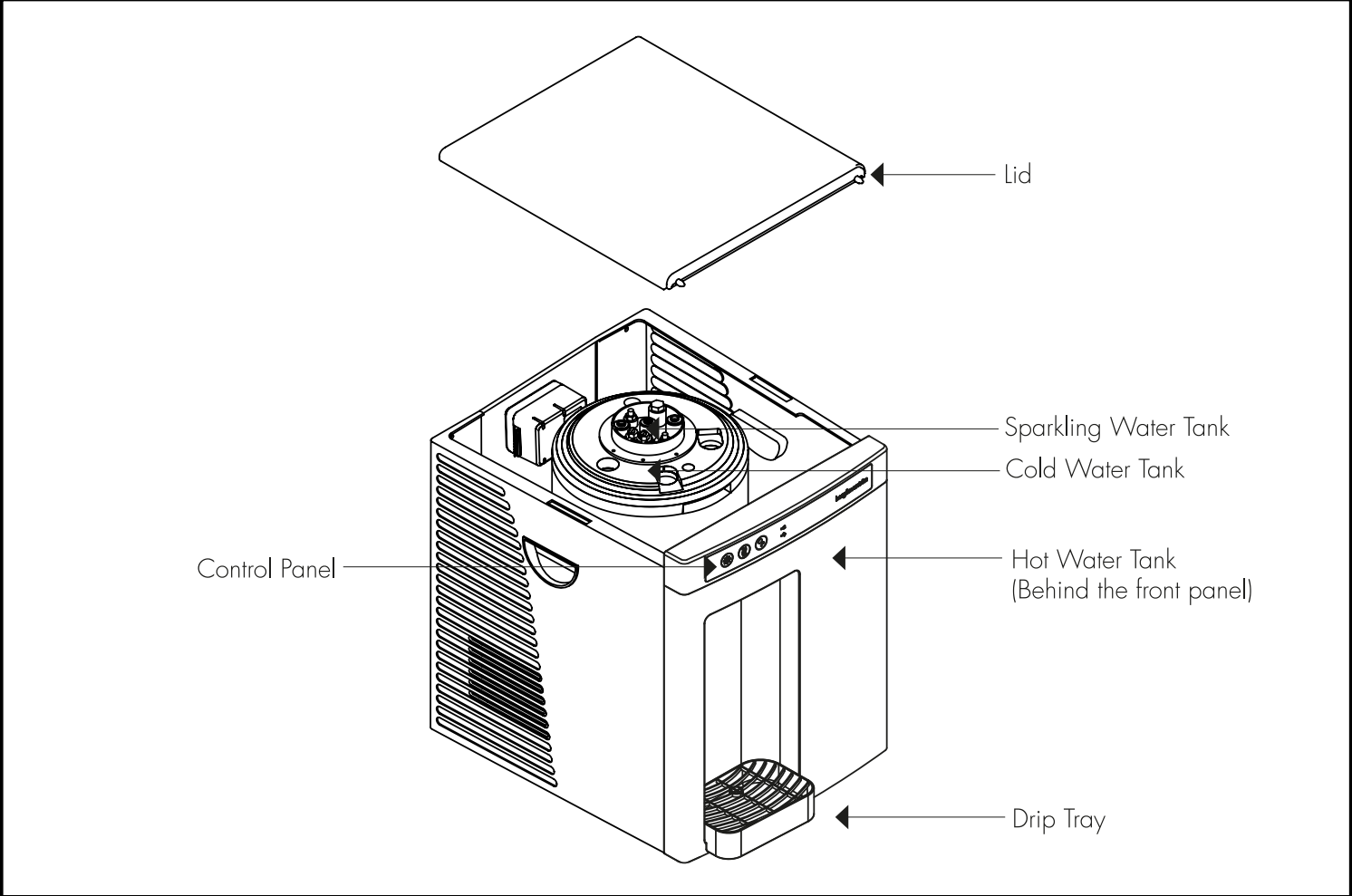
Every Base Cabinet is supplied with a Level Sensor Kit, comprising of:

- A water container.
- Sensor unit (c/w 2 no. CR3032 batteries). (Requires some assembly – [see Operation](#))
- Drip Tray with Drainage Outlet.
- Interconnection kit between unit and cabinet – [see Base Unit Exploded Diagram](#)

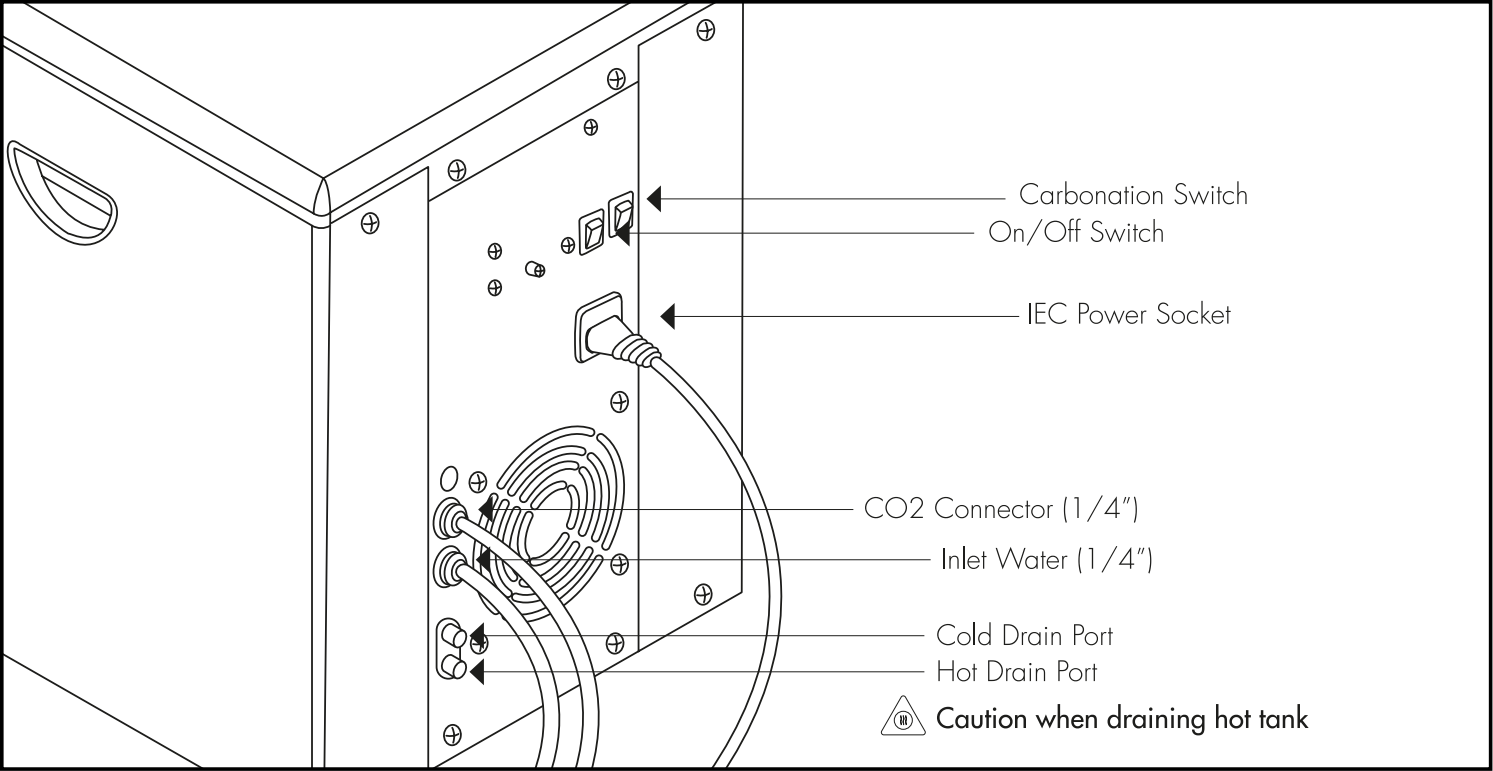


# Installation

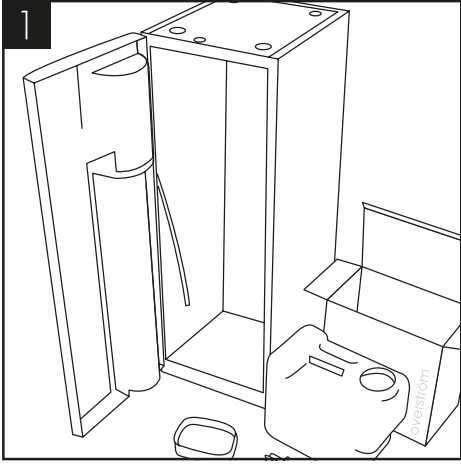
## Major Components



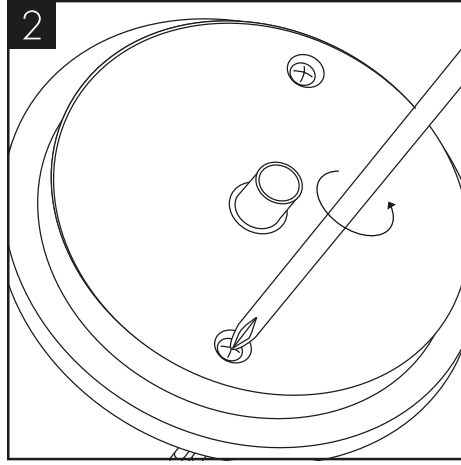
# Water and CO2 Connection



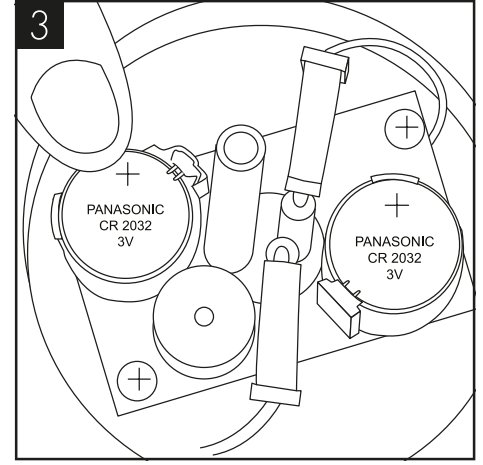
## Level Sensor Assembly



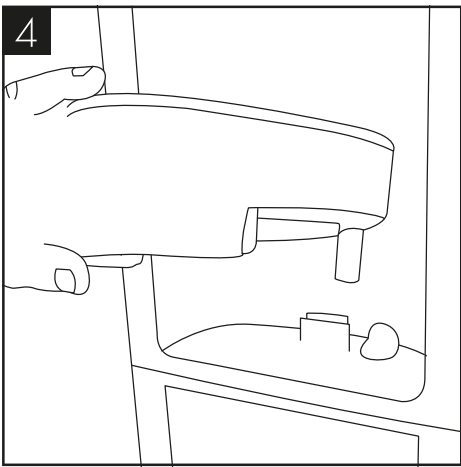
Check all parts are present.



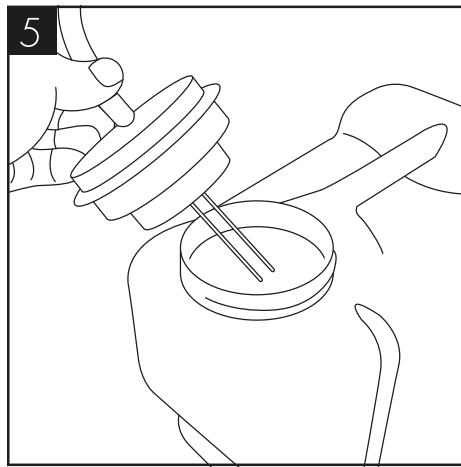
Unscrew lid.



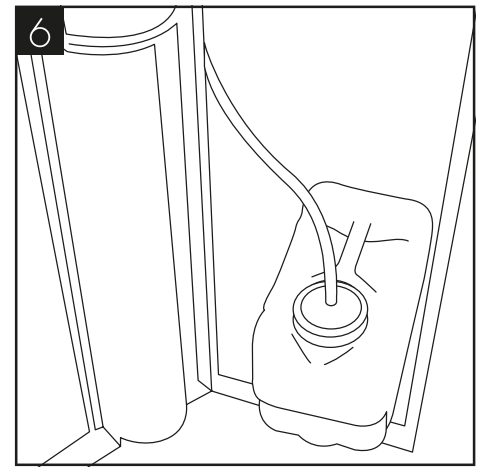
Fit both batteries and refit lid.



Exchange the drip tray.



Connect the drainage tubing that is pre-fitted down the front left hand side of the cabinet.



Level sensor positioned in container.

**NOTE:** A WARNING TONE WILL SOUND WHEN THE WATER RISES (3 BEEPS EVERY 15 SECONDS REPEATED). UPON EMPTYING THE CONTAINER THE WARNING TONE WILL STOP. CONTINUAL BEEP INDICATES LOW BATTERY POWER.



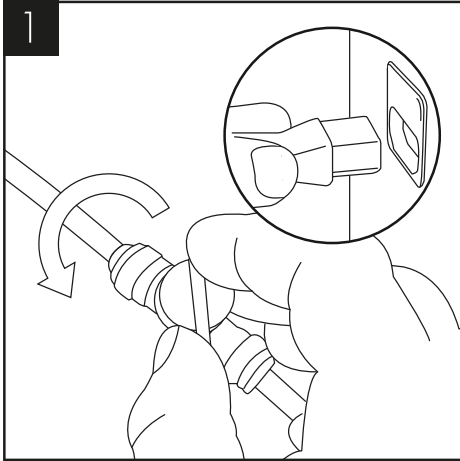
# Operation

## Water Connection & Operation

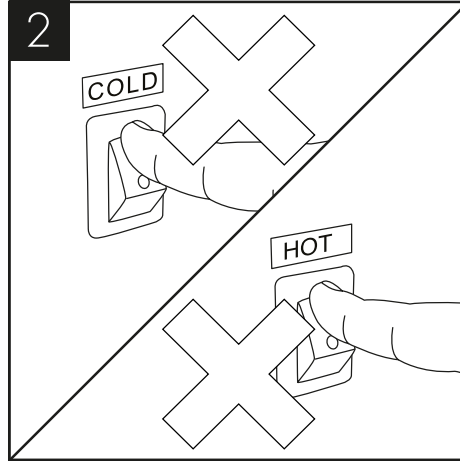
**NOTE: Water supply to the product must be within 1.5 – 3.5 bar.**

If the product is installed where the mains water pressure is greater than 3.5 bar then a pressure regulating valve must be installed prior to the water inlet bulkhead. If the product is installed where the mains water pressure is less than 1.5 bar then a pressure boost pump must be installed prior to the water inlet bulkhead.

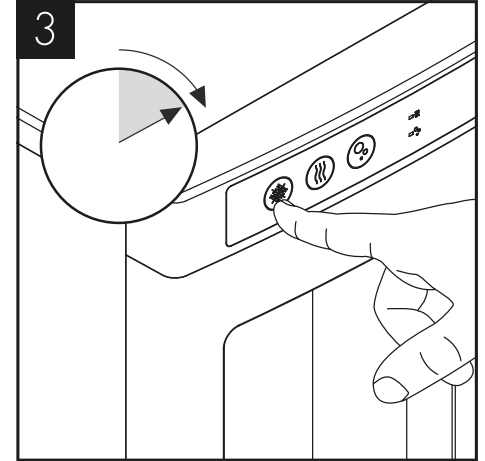
**Failure to comply with this will invalidate your warranty.**



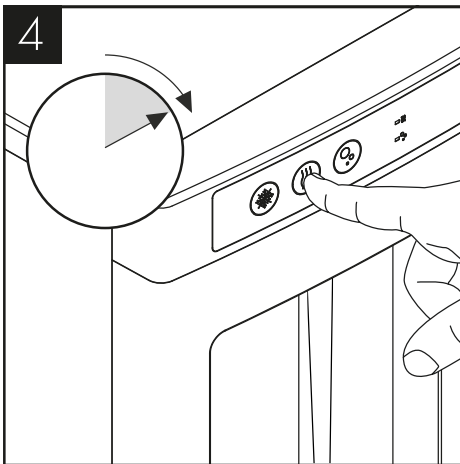
Connect and turn on the water supply. Then connect the power supply.



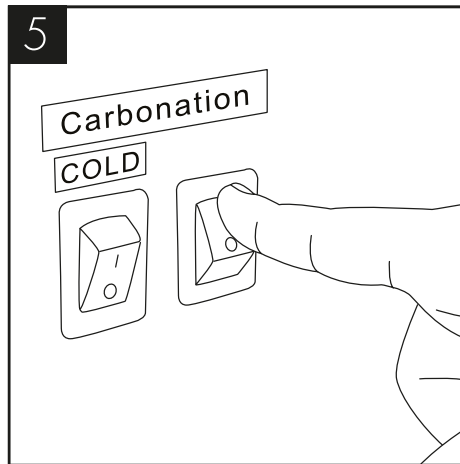
To avoid damage **do not turn on** the cold or hot power switches until water flows out of the machine. (If applicable)



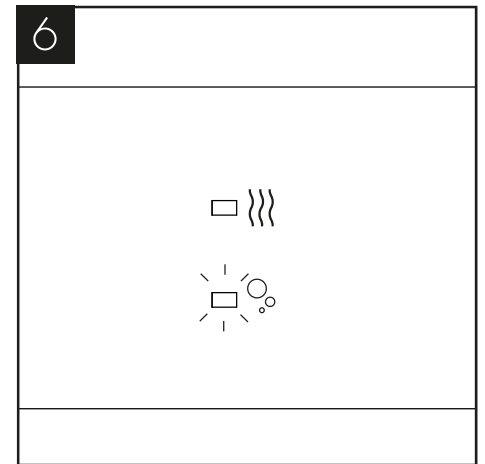
Press and hold the cold water button until water comes out.



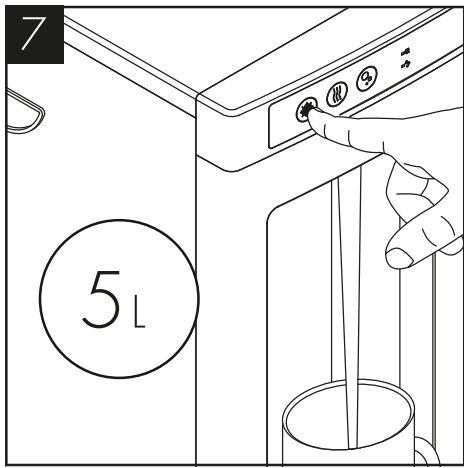
All hot & sparkling tanks must be purged of air by holding the corresponding button. Do not switch the hot system on until tank has been purged.



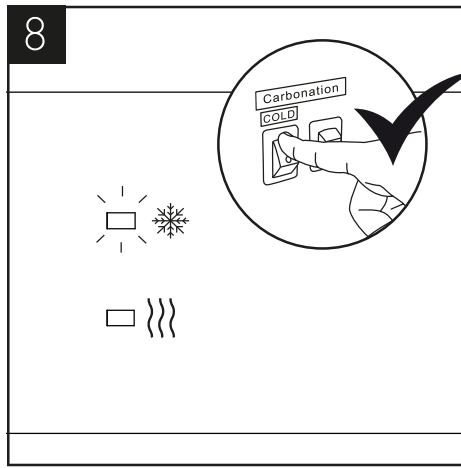
On sparkling models turn on the carbonation switch on the back of the unit.



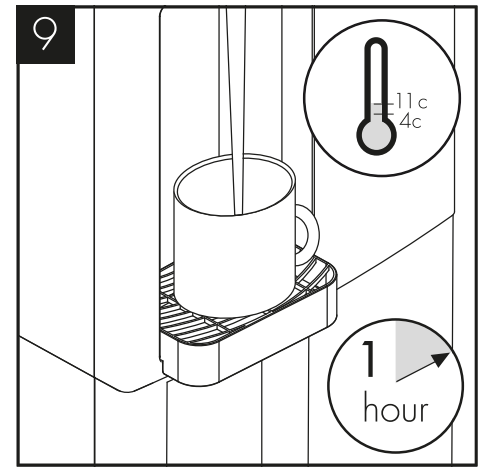
The relevant indicator lights will be lit.



Flush through 5 litres of clean water through each water option immediately after installing and before use.

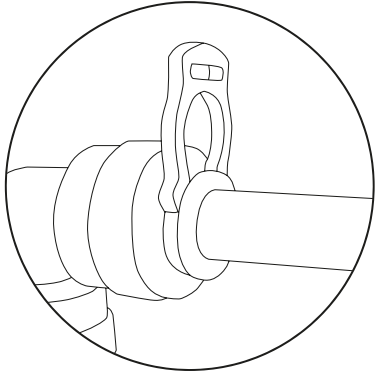


When the cold water switch is turned on, the cold water indicator will be lit.

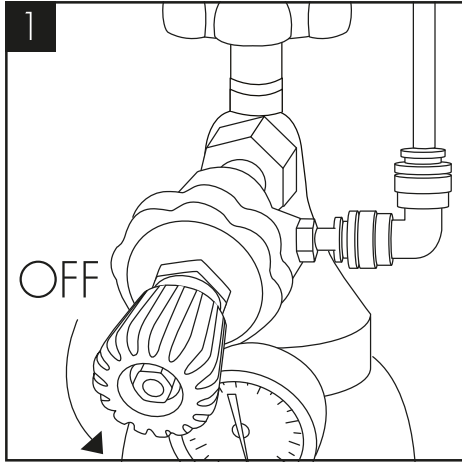


The temperature of cold water can be set from 4c to 11c. Allow up to 1 hour for the water to reach its minimum temperature.

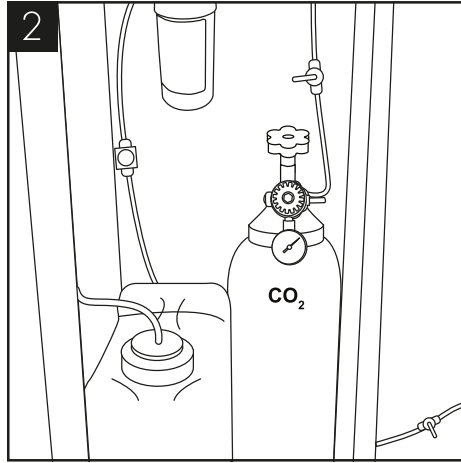
## CO2 Bottle Installation (Sparkling Versions Only)



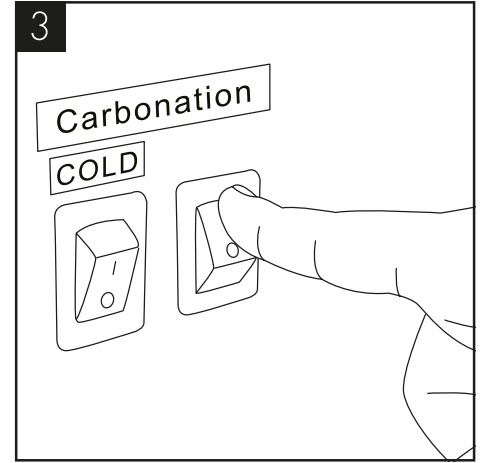
**IMPORTANT!** ALWAYS ENSURE SECURITY CLIPS ARE USED ON ALL WATER AND CO2 CONNECTIONS.



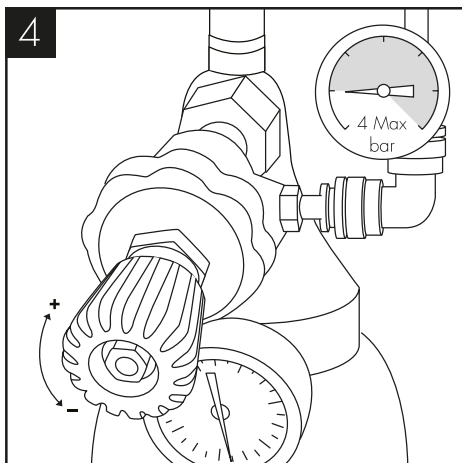
1 Attach the regulator to the disposable CO2 bottle, ensuring the regulator is closed.



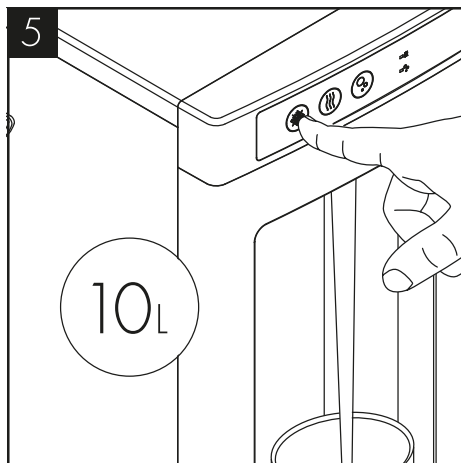
2 Connect the assembled CO2 bottle and regulator to the machine using 1/4 inch pipe.



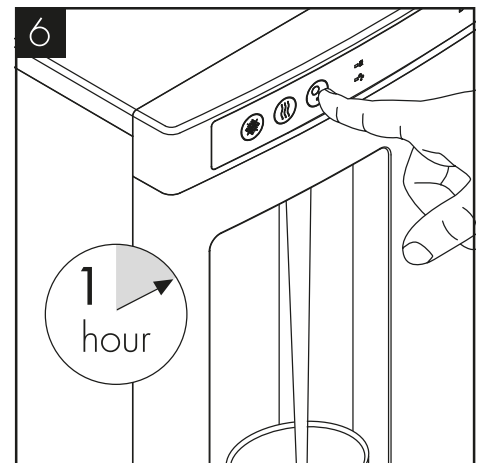
3 After completing the water installation, turn on the sparkling power switch and the pump will run. Do not open the regulator valve until the carbonated switch has been turned on.



4 We recommend between 3.5 – 4 bar. Do not exceed 4 bar pressure.

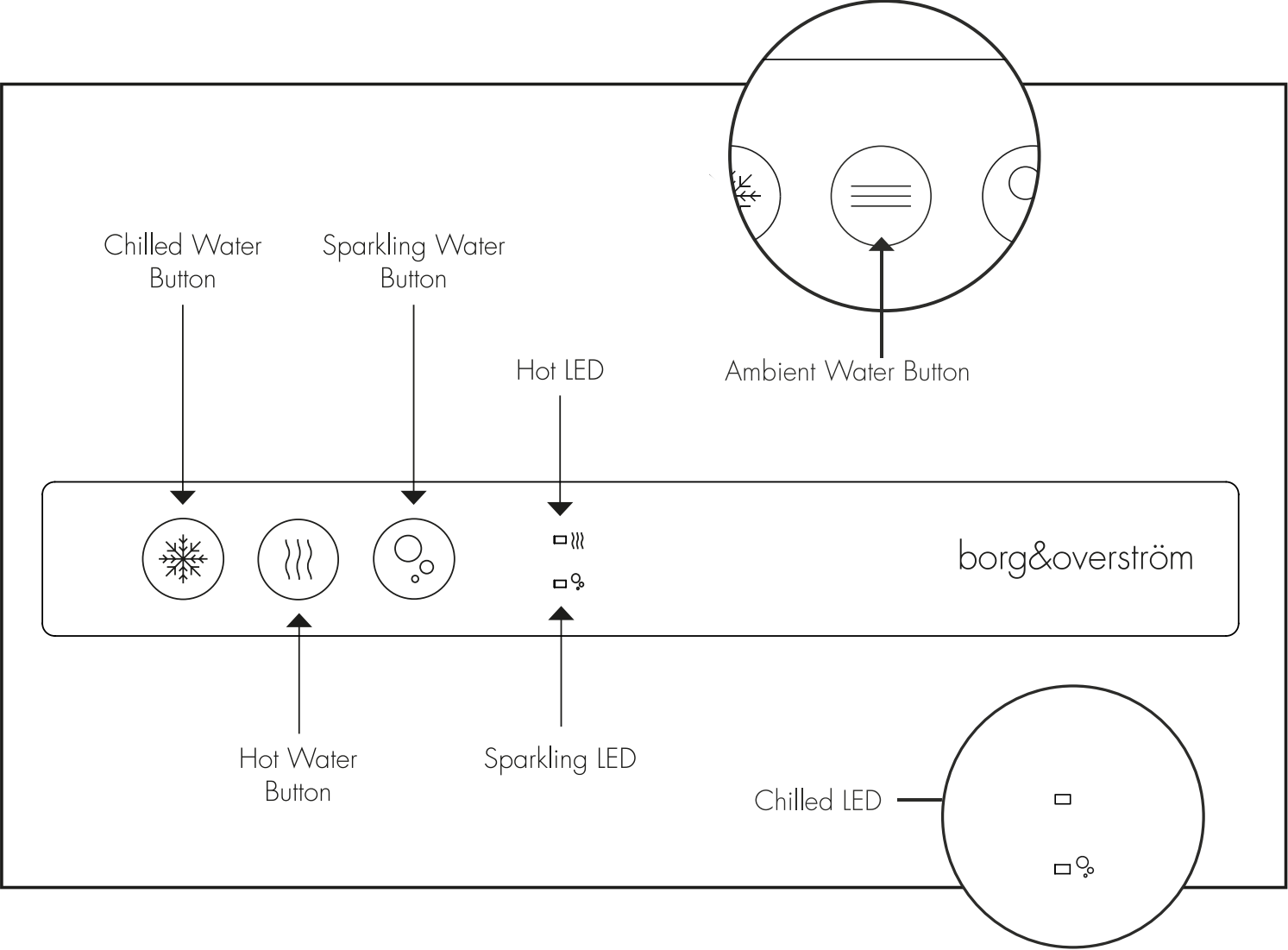


5 Flush through approximately 10 litres of sparkling water. Check and adjust the CO2 pressure accordingly.

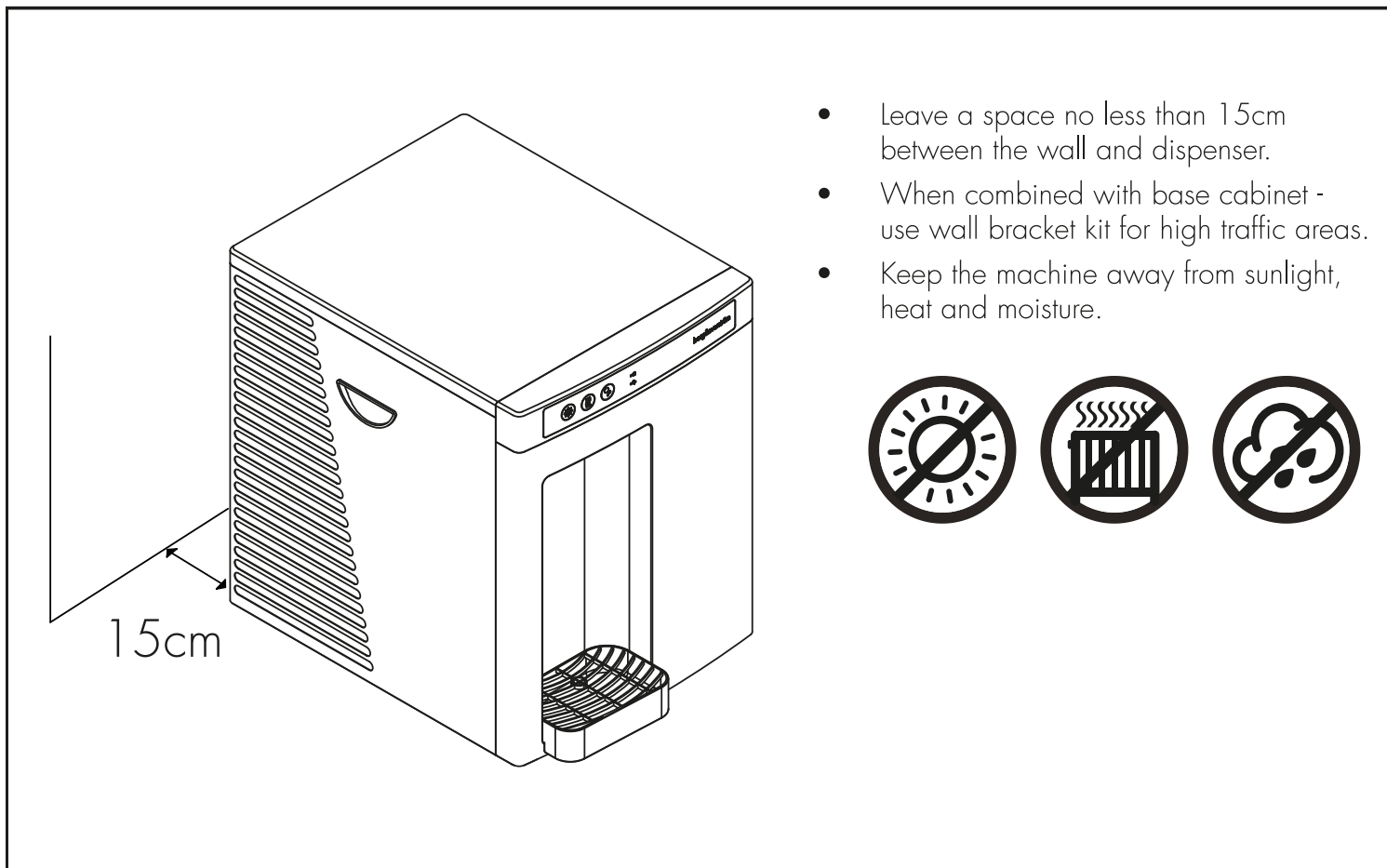


6 Following installation, it will be necessary to leave the machine for up to 1 hour for the initial chilling cycle to occur.

# Functions & Controls



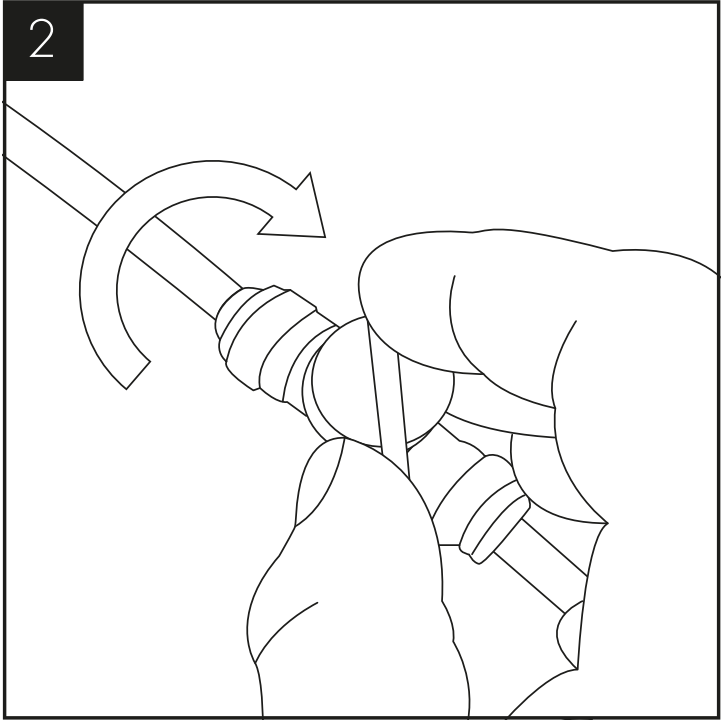
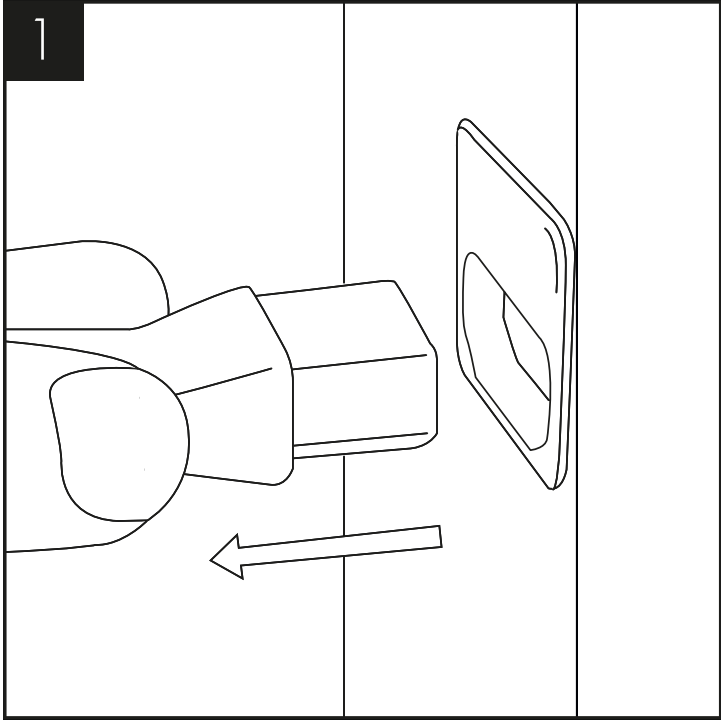
## General Safety



- Leave a space no less than 15cm between the wall and dispenser.
- When combined with base cabinet – use wall bracket kit for high traffic areas.
- Keep the machine away from sunlight, heat and moisture.

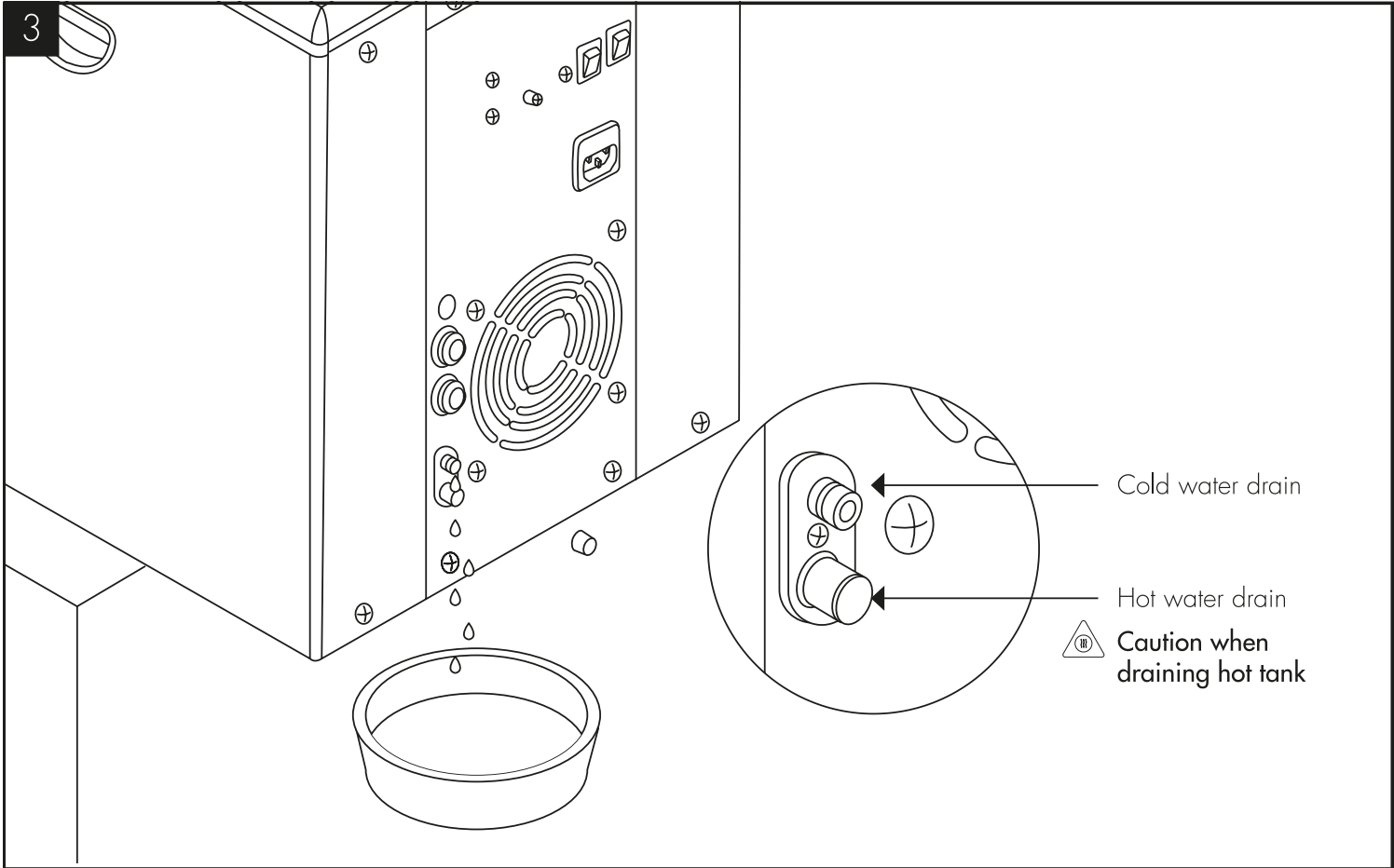
# Maintenance

## Isolation & Removal



Please make sure the machine is completely disconnected from the electrical supply before carrying out any maintenance work.

Turn off the water supply.

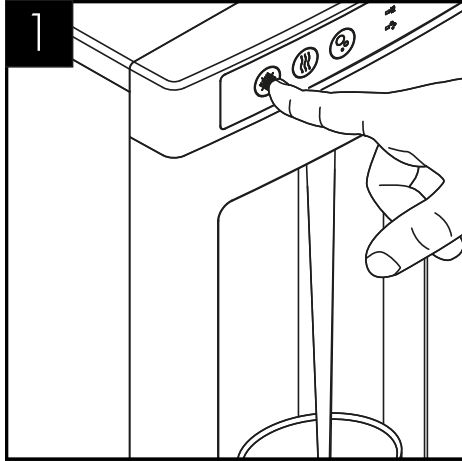


To drain the Direct Chill tank, remove the caps on the back of the machine. We recommend they are refitted immediately upon draining being completed.

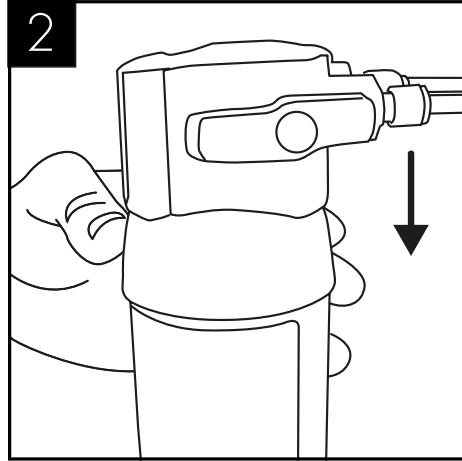
## Sanitisation Guide

Borg & Overström's recommended sanitisation schedule is a minimum of 6 months for a filter change and internal water pathway sanitisation using Sterizen® 30 Internal Water Cooler Sanitiser (Order code: 461025) and a minimum weekly for external cleaning, using Sterizen® Virus Killer Surface Sanitiser (Order code: 500033).

NOTE: Failure to use sanitising products and processes approved by Borg & Overström will invalidate your warranty. Before beginning the sanitation process please ensure that water is turned off at the mains and refer to the sanitisation liquid MSDS documentation for further information. Use Sterizen® hand gel and ensure gloves are worn.



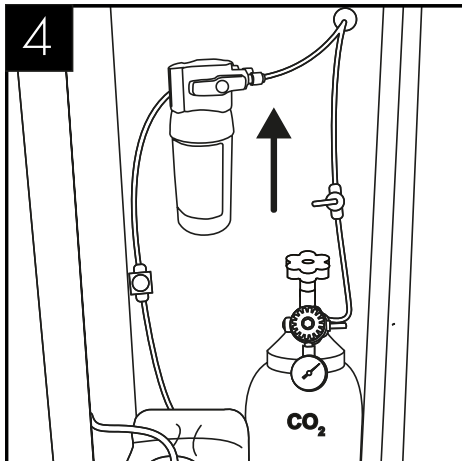
1 Briefly press cold/ambient dispense buttons to release internal water pressure from the machine.



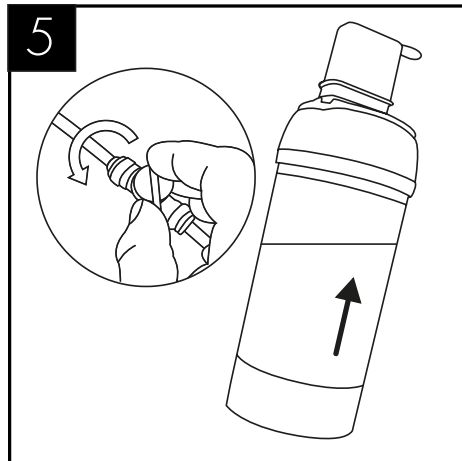
2 Remove the existing cartridge.



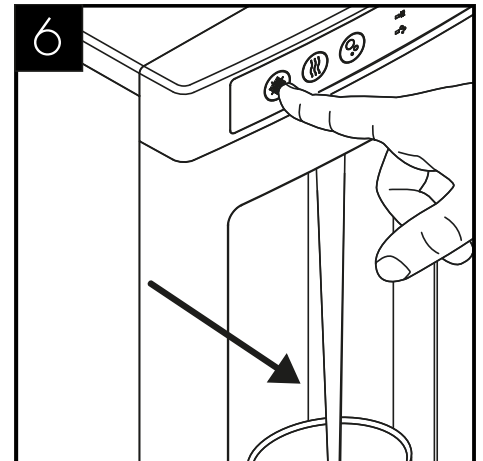
3 Add 25 ml of Sterizen® 30 Internal Water Cooler Sanitiser fluid to a clean and empty service filter cartridge.



4 Connect the service cartridge to machine.

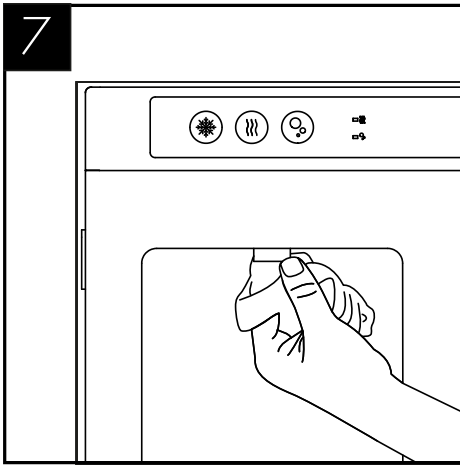


5 Turn on incoming water, allow service cartridge/doser to fill.

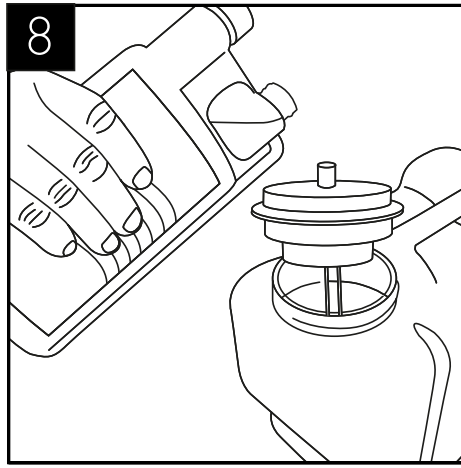


6 Dispense approx. 500ml water using the cold button. Repeat with sparkling button if present. Briefly press the ambient button too.

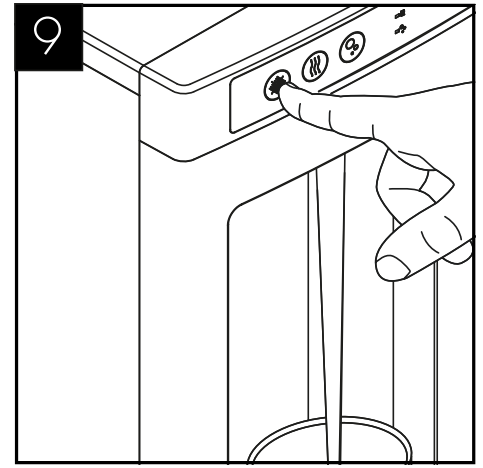




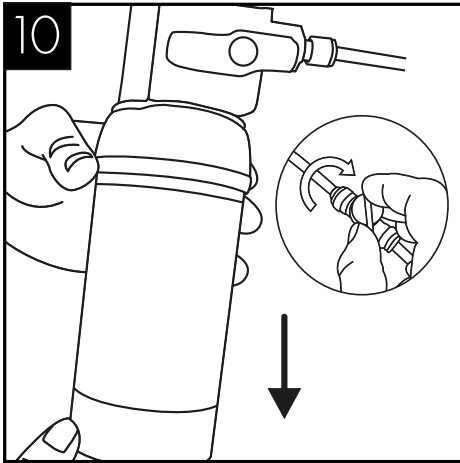
Leave the solution inside machine for sanitisation (minimum 5 minutes) while thoroughly cleaning the machine externally, pay particular attention to the dispense faucet and buttons.



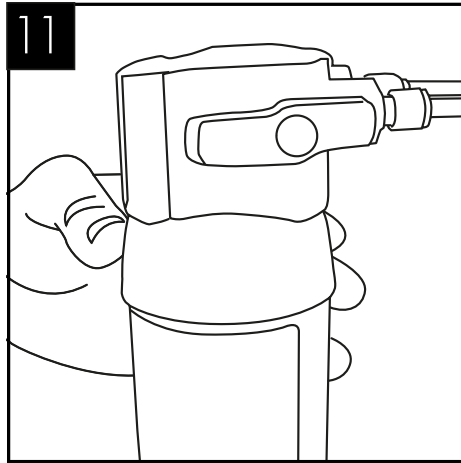
If a Waste Overflow System is fitted, empty this and flush through with a small amount of sanitisation fluid if needed. Remember to include the drip tray and connecting pipe work.



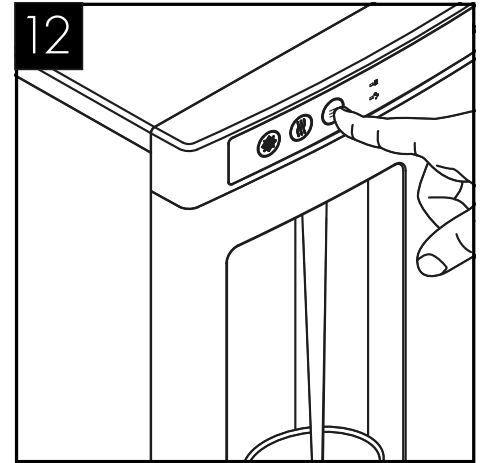
When the external cleaning (after a minimum of 5 minutes) is completed, flush 10 litres of water through the machine using the cold, sparkling and ambient buttons.



Turn off water and remove the service filter. Retain service filter for reuse.



Fit new filter. Turn on incoming water supply.

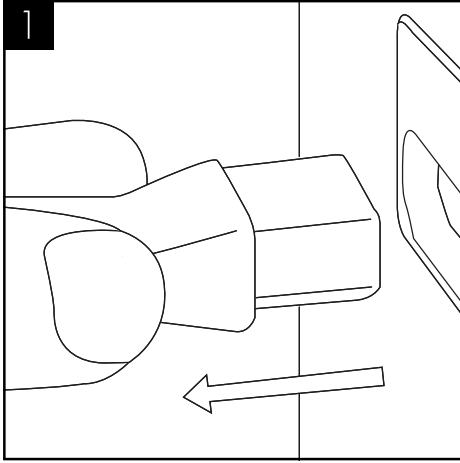


Pre-flush the new filter to waste using the ambient button (and sparkling button if present) until the water appears clear and is free of air. Flush through a small amount of water to check all functions.

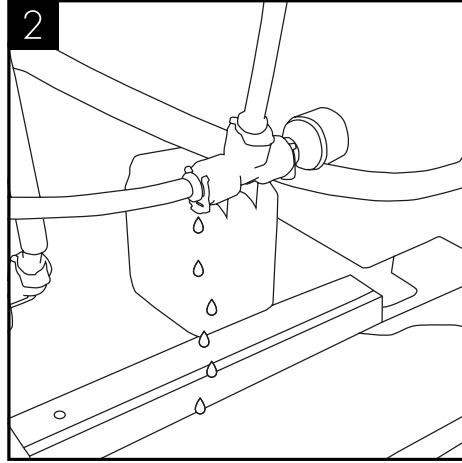
## Leak Detection (power cut-off) - All variants. Enhanced Leak Detection (Flood Prevention) Available as Optional Extra.

NOTE: If this machine is equipped with a leak detection device. When leaking is detected the dispense operation will be cut off automatically.

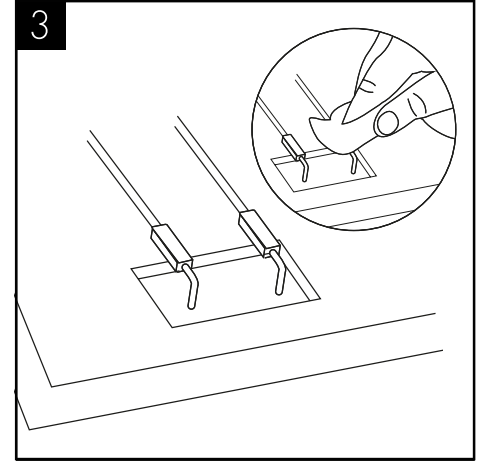
To reset:



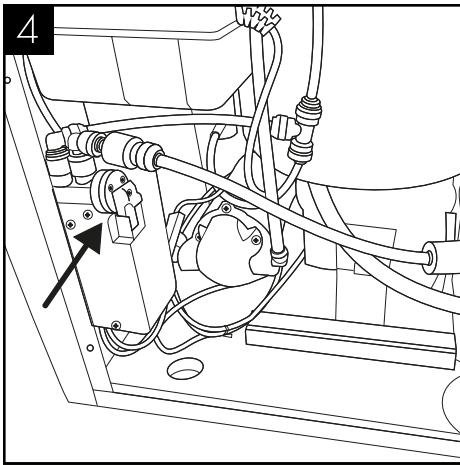
Unplug the machine.



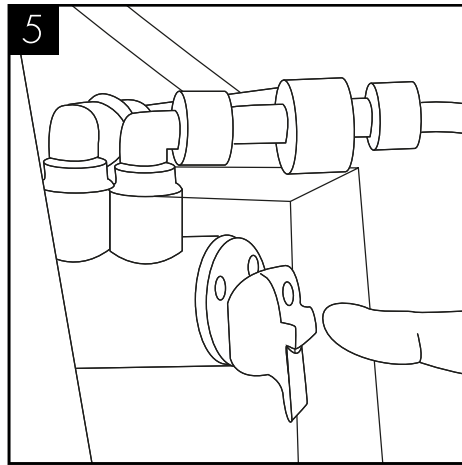
Locate the source of leakage and rectify.



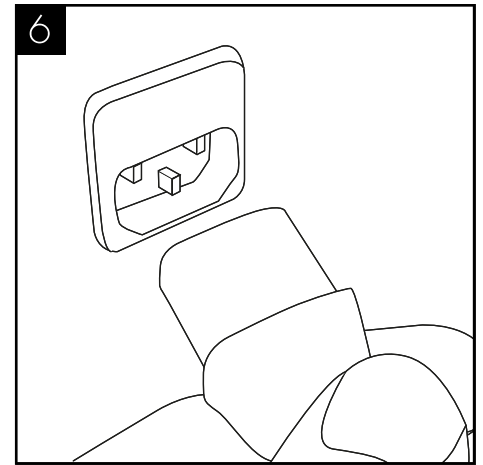
Locate the detection probe which can be found in the bottom rear left hand corner. Dry the probes and internal area with a dry cloth.



If enhanced Leak Detector is fitted as optional extra: locate the Leak Detector valve.



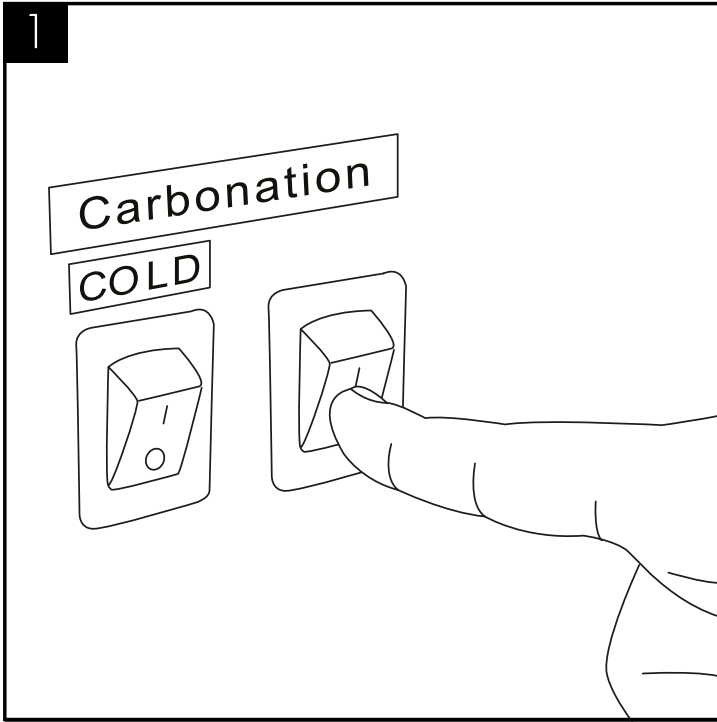
Reset the red lever (push it in).



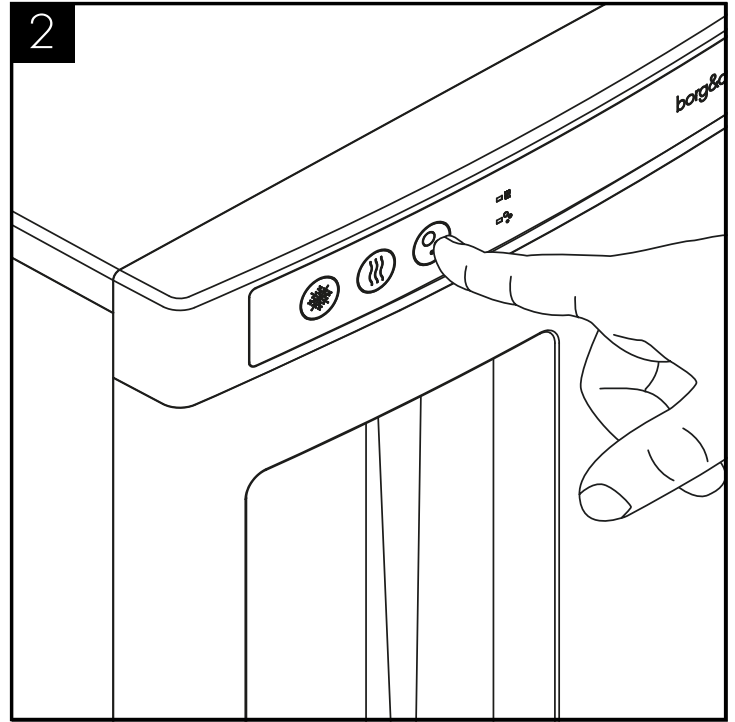
Reconnect the power to machine and test operation.

If leak detector is fitted as optional extra, reset the red lever (push it in)

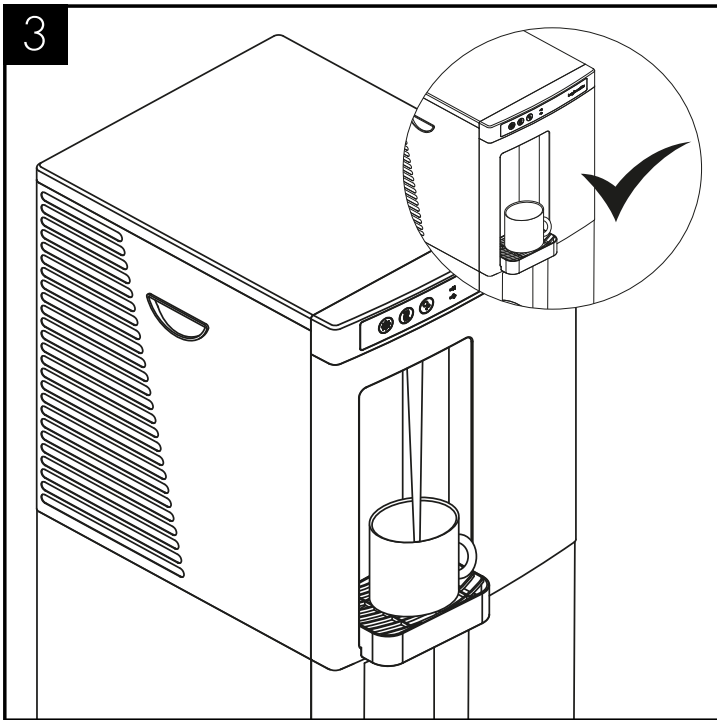
# Emptying the Carbonation Tank for Transportation



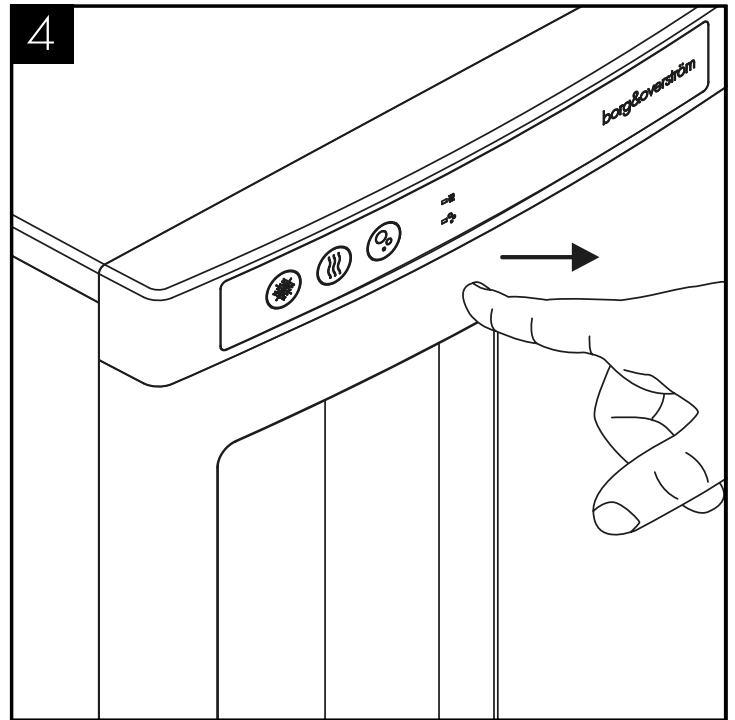
Switch off the Carbonation System switch on the back of the unit.



Press and hold the Sparkling water dispense button until all water is expelled.



The tank is empty of sparkling water when only CO<sub>2</sub> is being released.



Ensure to release the Sparkling water button and take care to avoid releasing excess amounts of CO<sub>2</sub> gas.

# Advanced Troubleshooting

## Fault Diagnosis: No Water Dispenses

Problem/Report	Possible Cause	Suggested Action
<b>From Ambient Dispense</b>	Water Supply turned off.	Check all that taps/valves/ filters on the incoming supply are fitted and are turned on.
	"Waterblock" tripped off (and tank empty).	Reset "Waterblock" (and check for any leaks).
	"Leak detector" (if fitted) tripped off (and tank empty).	Disconnect the power and water supply, reset the machine (check for leaks).
	Solenoid not working.	Dismantle and check the solenoid, completely replacing the solenoid as necessary.
	No Electricity/Power Supply.	Check power cord is connected and live. Check machine is switched on.
	Blocked tank outlets/pipes.	Check and unblock or replace as needed.
	Control PCB not working.	Check/replace Control PCB.
<b>From Cold Dispense</b>	Firstly all as for Ambient Dispense.	Carry out checks and actions as for ambient dispense.
	Chiller tank frozen – Thermostat set too low.	Thaw out the machine and increase cold water temperature.
	Chiller tank Frozen - Thermostat not working.	Thaw out the machine and check thermostat. Replace Cold Water thermostat as needed.
	Chiller tank frozen.	Circulation pump not working / Thaw out the machine and check circulation pump. Replace circulation pump as needed.
<b>Problem/Report</b>	<b>Possible Cause</b>	<b>Suggested Action</b>
<b>From Hot Dispense</b>	Firstly all as for Ambient Dispense.	Carry out checks and actions as for ambient dispense.
	Airlock in dispense pipe work.	Unblock/replace hot water pipe and hot vent pipe.
	Tank filled with limescale.	Replace tank.

Problem/Report	Possible Cause	Suggested Action
<b>From Sparkling Valve</b>	Firstly as for ambient and cold valve.	Carry out the checks and actions as for cold and ambient.
	Low or no CO2.	Check and replace cylinder as necessary.
	Pump not operating.	Check carbonator level control system.
		Check probes connected/leads attached. Check power supply to pump.
	Carbonator Tank over pressurised with CO2.	<ol style="list-style-type: none"> <li>1. Switch the Sparkling System off.</li> <li>2. Shut off CO2 supply.</li> <li>3. Press the Sparkling Water button to release CO2 from carbonator.</li> <li>4. Switch the Sparkling system on.</li> <li>5. Check pump operation is running normally.</li> <li>6. Wait for the pump to stop running.</li> <li>7. Re-open CO2 supply.</li> </ol>
	Pump Feed Solenoid Valve.	Check function/condition and repair/replace accordingly.
	Carbonation System switched off.	Switch on (Switch on back of the machine).

## Fault Diagnosis: Water Dispenses but not Correct Temperature

Problem/Report	Possible Cause	Suggested Action
<b>Ambient Water too Warm</b>	Low usage and/or heat from compressor influencing stored water.	Check tank insulation and/or advise customer.
	High usage and/or water supply pipe in warm ducting.	Advise customer.
<b>Cold Water not Cold</b>	Cooling switched off.	Check switch positions as necessary.
	Compressor runs and switching off (cool/warm to touch) - Thermostat set too high.	Decrease cold thermostat set point.
	Thermostat not working.	Check/replace thermostat.
	Compressor runs but not switching off (hot to touch).	Please contact technical support.
	Refrigeration problem.	Please contact technical support.
	Compressor not running at all - No electricity power supply.	Check the Power cord is connected and live, and the machine is switched on.

Problem/Report	Possible Cause	Suggested Action
	Compressor only hums slightly/ briefly.	Check and replace relays.
	Relays loose.	Check and refit relays.
	Compressor not working.	Please contact technical support.
	Fan not working.	Check and replace, as required.
<b>Hot Water not Hot</b>	Hot water mode switched off.	Switch on hot water mode (status LED should show).
	Heating operation tripped off.	Reset overheat button on hot tank.
	Break in supply wiring to control circuit.	Locate break and repair.
	Hot water demand too high.	Advise user/s.
	Heating element not working.	Check and replace Hot tank as required.
	Hot tank heavily scaled (signs of scale in top of tank, loud boiling noises etc).	Carry out thorough descale or replace hot tank.
	Break in supply wiring to main element.	Locate break and repair.

## Fault Diagnosis: Water Leaks

Problem/Report	Possible Cause	Suggested Action
Water lying on top edge of lower door panel and/or bottom of cabinet.	Overflowing Drip Tray waste container.	Empty Waste Container and check drainpipe is not blocked.
Water lying in bottom of machine	Level Sensors not working.	Check operation/repair/replace as required.
	Leak in supply inlet pipe work and/or filter.	Locate and repair accordingly.
	Leak from machine water pipe work fittings.	Locate and repair accordingly.  Check pressure and fit pressure reducing valve if needed.

## Fault Diagnosis: Miscellaneous

Problem/Report	Possible Cause	Suggested Action
Repeating beeping noise	Level Sensor fitted and tank full.	Empty Level Sensor Tank.

Problem/Report	Possible Cause	Suggested Action
<b>No LED Control Lights</b>	No electricity to Machine.	Check power supply and reconnect as necessary (Also check out other symptoms as described separately).
	Check Fuse in IEC Socket.	Replace if necessary.
	Control PCB not working (Machine working normally otherwise).	Check/replace PCB.
<b>Machine Shakes on Start-up.</b>	Compressor Starting.	No action needed. This is quite normal.
	Level Surface.	
	Uneven Surface.	Level up machine using adjustable feet.
<b>Tripping out Electricity Supply.</b>	Missing Fixings.	Replace missing fixings.
	Machine in high humidity environment.	Discuss possible repositioning with customer.
	Electrical circuitry faults.	Test, identify and address accordingly. See Electrical Diagrams.
		Please contact technical support.

Problem/Report	Possible Cause	Suggested Action
<b>Slow but Continuous Water Dispense from Ambient or Cold Tap</b>	Low incoming water pressure.	Consider replumbing to alternative supply if possible.
		Fit Booster pump set.
<b>Intermittent Water Dispense from Ambient or Cold Water Valve</b>	Trapped air in pipework (especially where water pressure is low after filter change).	Hold button on to purge air out (This could take several minutes where pressure is low). Pre-flush filters.
	Button not being pressed enough.	Press button firmly. Could be caused by surrounding cold environment making the button stiffer.
	Faulty PCB.	Replace PCB.
<b>Intermittent Water Dispense from Ambient or Cold Water Valve and hammering noise.</b>	Fluctuating mains water pressure situation.	Please contact technical support.
<b>Continuous Water Dispense from Ambient/Cold or Hot water valve.</b>	Button jammed on/faulty.	Replace PCB or/button panel as needed.

Problem/Report

Possible Cause

Suggested Action

---

Debris blocking hole in diaphragm window.

Dismantle valve and clean out.

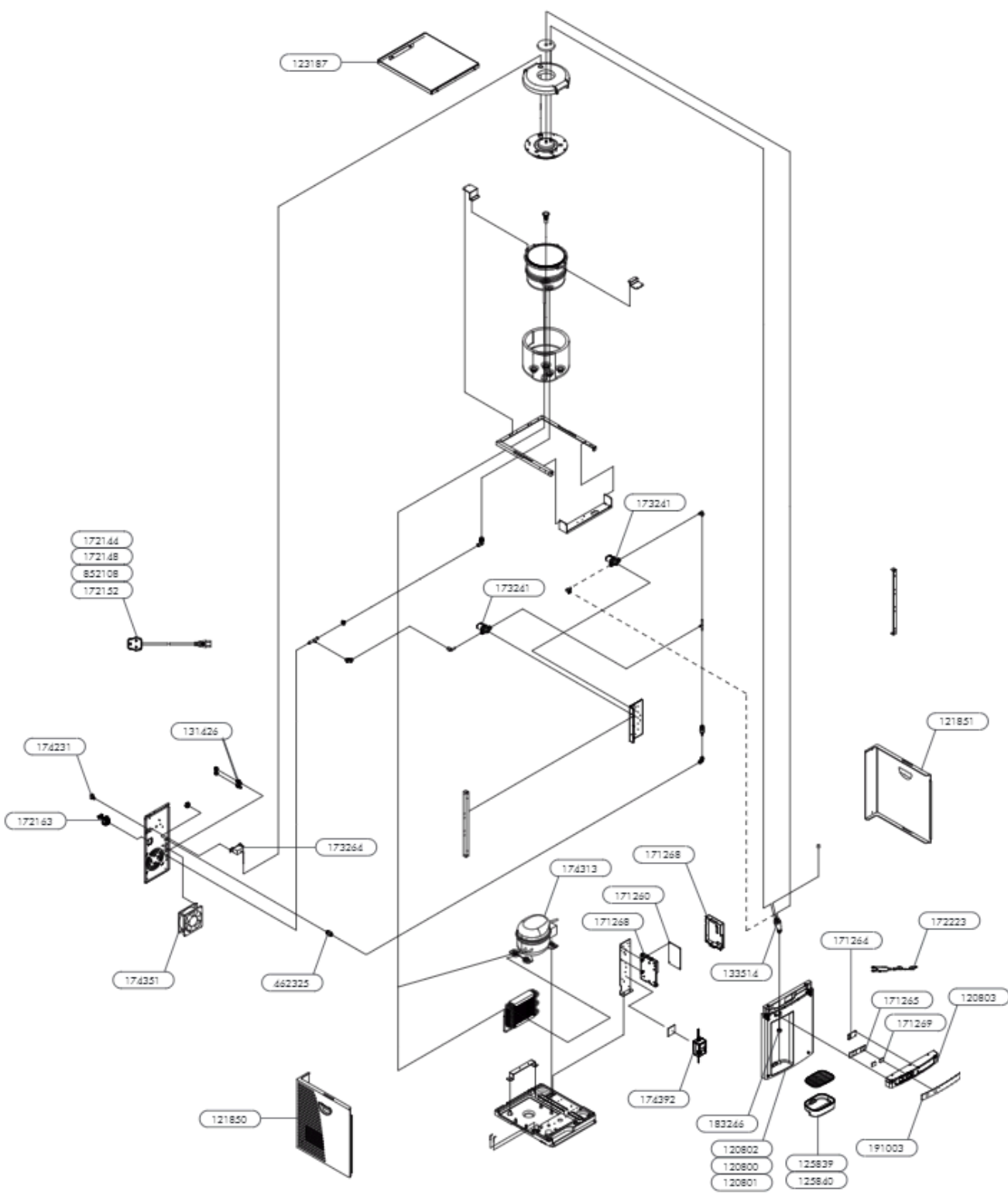


---

## Exploded Diagrams

Chilled & Ambient



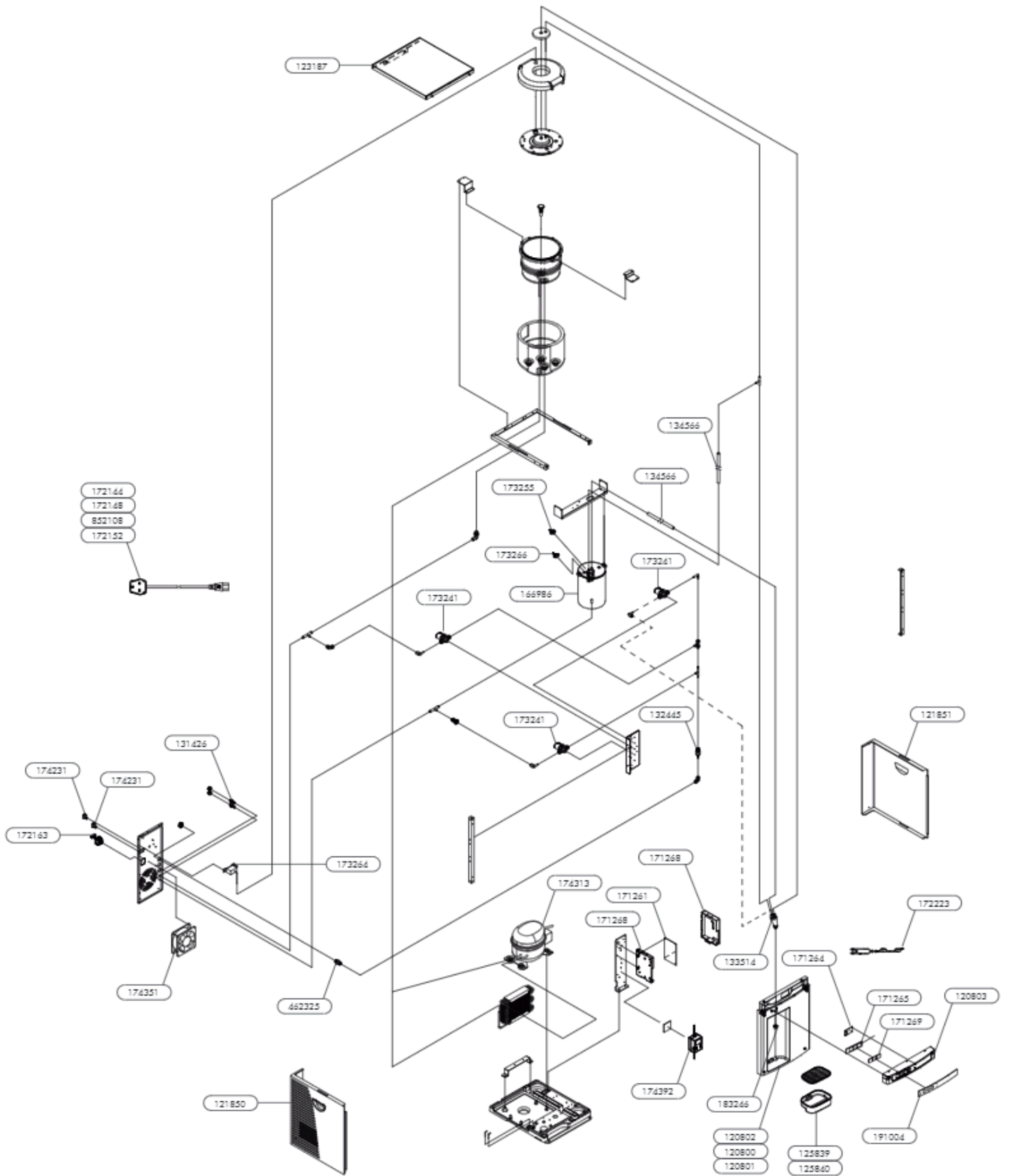


Part number:	Description:		
120800	B4.2 Front Panel - Silver		<a href="#">View in store</a>
120801	B4.2 Front Panel - White		<a href="#">View in store</a>
120802	B4.2 Front Panel - Black		<a href="#">View in store</a>
120803	B4.2 Upper Front Panel		<a href="#">View in store</a>
121850	B4 Left Side Panel inc handle		<a href="#">View in store</a>
121851	B4 Right Side Panel inc handle		<a href="#">View in store</a>
123187	Top Cover Panel		<a href="#">View in store</a>
125839	B4.2 Drip Tray Set with drainage - Black		<a href="#">View in store</a>
125840	B4.2 Drip Tray Set without drainage - Black		<a href="#">View in store</a>
131426	2-Port Drainage Outlet		<a href="#">View in store</a>
133514	Faucet 4 outlets		<a href="#">View in store</a>
171260	B3.2/B4.2 Chilled & Ambient Main PCB		<a href="#">View in store</a>
171264	B3.2/B4.2 LED Display PCB		<a href="#">View in store</a>
171265	Touch Panel PCB Board		<a href="#">View in store</a>
171268	B3.2/B4.2 Main PCB Case Assembly		<a href="#">View in store</a>
171269	B3.2/B4.2 Touch Icon Illumination Diffuser		<a href="#">View in store</a>
172144	Power Cord Set - Danish		<a href="#">View in store</a>
172148	Power Cord Set - Schuko/EURO		<a href="#">View in store</a>
172152	Power Cord Set - UK		<a href="#">View in store</a>
172163	IEC Fused Socket		<a href="#">View in store</a>
172223	B3.2/B4.2 LED PCB Wiring Loom		<a href="#">View in store</a>
173241	HP1/4PFx1/4PFS24 Solenoid Valve		<a href="#">View in store</a>
173264	Cold Temperature Thermostat		<a href="#">View in store</a>
174231	Electric Rocker Switch		<a href="#">View in store</a>
174313	Compressor		<a href="#">View in store</a>
174351	Cooling Fan		<a href="#">View in store</a>

Part number:	Description:		
174392	Transformer 24VDC		<a href="#">View in store</a>
183246	Chrome B3.2/B4.2 Faucet Shroud		<a href="#">View in store</a>
191003	B4.2 Chilled & Ambient Touch Control Panel		<a href="#">View in store</a>
462325	Bulkhead 1/4" Push-Fit Connector		<a href="#">View in store</a>
852108	Power Cord Set - Swiss		<a href="#">View in store</a>

Showing 1 to 31 of 31 entries





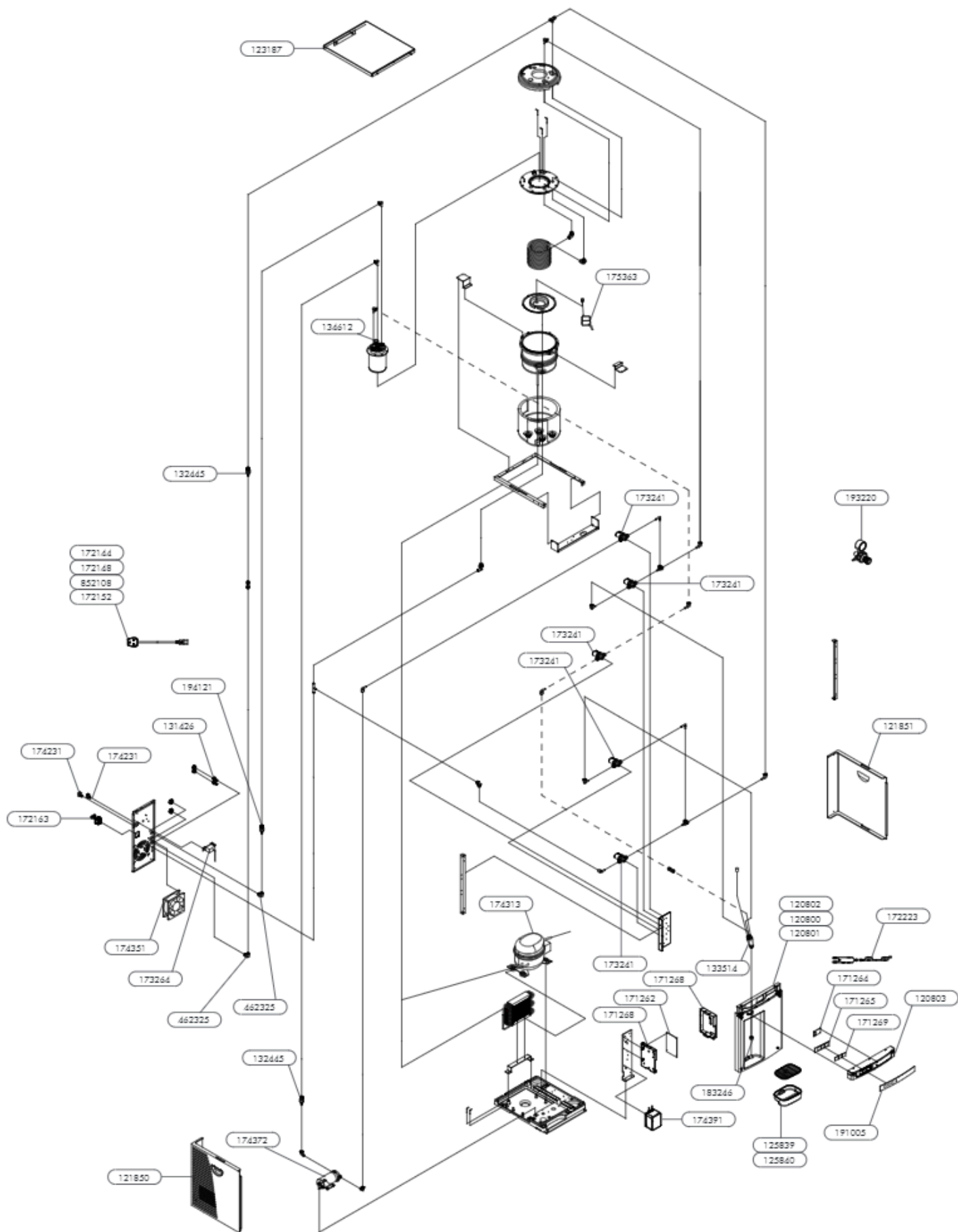
Part number:	Description:		
171261	B3.2/B4.2 Chilled, Ambient & Hot Main PCB		<a href="#">View in store</a>
174313	Compressor		<a href="#">View in store</a>
172223	B3.2/B4.2 LED PCB Wiring Loom		<a href="#">View in store</a>
174392	Transformer 24VDC		<a href="#">View in store</a>
171265	B3.2/B4.2 Touch Dispense Screen PCB		<a href="#">View in store</a>
171269	B3.2/B4.2 Touch Icon Illumination Diffuser		<a href="#">View in store</a>
171264	B3.2/B4.2 LED Display PCB		<a href="#">View in store</a>
173264	Cold Temperature Thermostat		<a href="#">View in store</a>
174231	Electric Rocker Switch		<a href="#">View in store</a>
173241	HP1/4PFx1/4PFS24 Solenoid Valve		<a href="#">View in store</a>
172163	IEC Fused Socket		<a href="#">View in store</a>
174351	Cooling Fan		<a href="#">View in store</a>
173255	105 Hot Tank Over-heat cut out		<a href="#">View in store</a>
173266	92 Hot Tank Thermostat Sensor		<a href="#">View in store</a>
183246	Chrome B3.2/B4.2 Faucet Shroud		<a href="#">View in store</a>
191004	B4.2 Chilled, Ambient & Hot Touch Control Panel		<a href="#">View in store</a>
123187	Top Cover Panel		<a href="#">View in store</a>
133514	Faucet 4 outlets		<a href="#">View in store</a>
171268	B3.2/B4.2 Main PCB Case Assembly		<a href="#">View in store</a>
131426	2-Port Drainage Outlet		<a href="#">View in store</a>
132445	Single Check Valve		<a href="#">View in store</a>
120802	B4.2 Front Panel - Black		<a href="#">View in store</a>
120800	B4.2 Front Panel - Silver		<a href="#">View in store</a>
120801	B4.2 Front Panel - White		<a href="#">View in store</a>
120803	B4.2 Upper Front Panel		<a href="#">View in store</a>
125839	B4.2 Drip Tray Set with drainage - Black		<a href="#">View in store</a>

Part number:	Description:		
125840	B4.2 Drip Tray Set without drainage - Black		<a href="#">View in store</a>
121850	B4 Left Side Panel inc handle		<a href="#">View in store</a>
121851	B4 Right Side Panel inc handle		<a href="#">View in store</a>
134566	Straight Type Silicon Tube		<a href="#">View in store</a>
166986	166986 Hot Tank		<a href="#">View in store</a>
172144	Power Cord Set - Danish		<a href="#">View in store</a>
172148	Power Cord Set - Schuko/EURO		<a href="#">View in store</a>
852108	Power Cord Set - Swiss		<a href="#">View in store</a>
462325	Bulkhead 1/4" Push-Fit Connector		<a href="#">View in store</a>
172152	Power Cord Set - UK		<a href="#">View in store</a>

Showing 1 to 36 of 36 entries





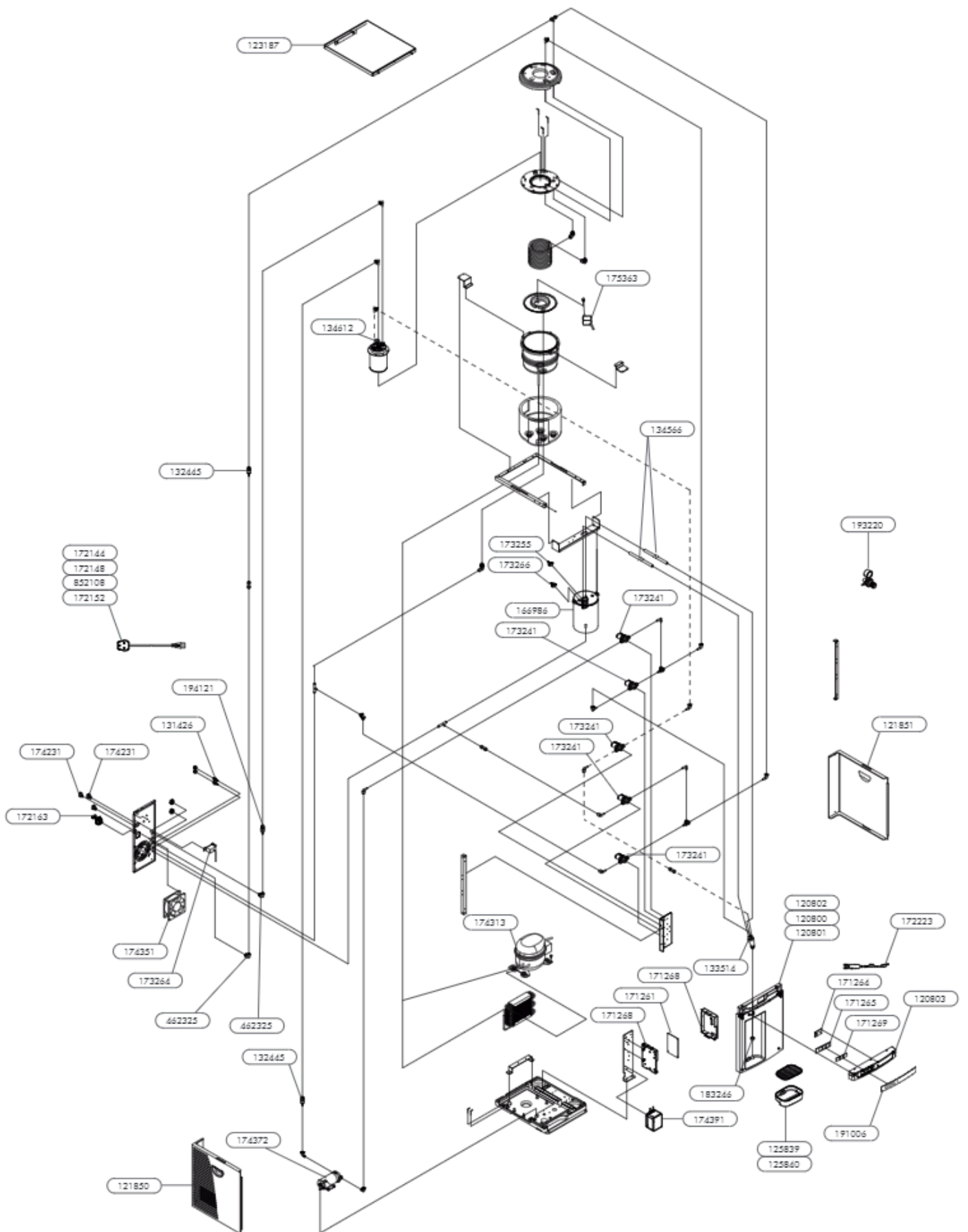


Part number:	Description:		
174391	24vdc Carbonation Pump Transformer		<a href="#">View in store</a>
175363	Circular DC Circulation Pump		<a href="#">View in store</a>
171262	B3.2/B4.2 Chilled, Ambient & Sparkling Main PCB		<a href="#">View in store</a>
174313	Compressor		<a href="#">View in store</a>
171265	Touch Panel PCB Board		<a href="#">View in store</a>
172223	B3.2/B4.2 LED PCB Wiring Loom		<a href="#">View in store</a>
171269	B3.2/B4.2 Touch Icon Illumination Diffuser		<a href="#">View in store</a>
173264	Cold Temperature Thermostat		<a href="#">View in store</a>
174231	Electric Rocker Switch		<a href="#">View in store</a>
173241	HP1/4PFx1/4PFS24 Solenoid Valve		<a href="#">View in store</a>
172163	IEC Fused Socket		<a href="#">View in store</a>
174351	Cooling Fan		<a href="#">View in store</a>
183246	Chrome B3.2/B4.2 Faucet Shroud		<a href="#">View in store</a>
191005	B4.2 Chilled, Ambient & Sparkling Touch Control Panel		<a href="#">View in store</a>
123187	Top Cover Panel		<a href="#">View in store</a>
133514	Faucet 4 outlets		<a href="#">View in store</a>
171268	B3.2/B4.2 Main PCB Case Assembly		<a href="#">View in store</a>
132445	Single Check Valve		<a href="#">View in store</a>
120802	B4.2 Front Panel - Black		<a href="#">View in store</a>
120800	B4.2 Front Panel - Silver		<a href="#">View in store</a>
120801	B4.2 Front Panel - White		<a href="#">View in store</a>
131426	2-Port Drainage Outlet		<a href="#">View in store</a>
120803	B4.2 Upper Front Panel		<a href="#">View in store</a>
125839	B4.2 Drip Tray Set with drainage - Black		<a href="#">View in store</a>
125840	B4.2 Drip Tray Set without drainage - Black		<a href="#">View in store</a>
121850	B4 Left Side Panel inc handle		<a href="#">View in store</a>

Part number:	Description:		
121851	B4 Right Side Panel inc handle		<a href="#">View in store</a>
193220	CO2 Regulator with gauge c/w elbow		<a href="#">View in store</a>
172144	Power Cord Set - Danish		<a href="#">View in store</a>
172148	Power Cord Set - Schuko/EURO		<a href="#">View in store</a>
852108	Power Cord Set - Swiss		<a href="#">View in store</a>
172152	Power Cord Set - UK		<a href="#">View in store</a>
134612	Pressure Release Valve for Carbonation Tank		<a href="#">View in store</a>
174372	B3.2/B4.2 Carbonation Pump 24VDC		<a href="#">View in store</a>
462325	Bulkhead 1/4" Push-Fit Connector		<a href="#">View in store</a>
194121	Grit Filter		<a href="#">View in store</a>

Showing 1 to 36 of 36 entries





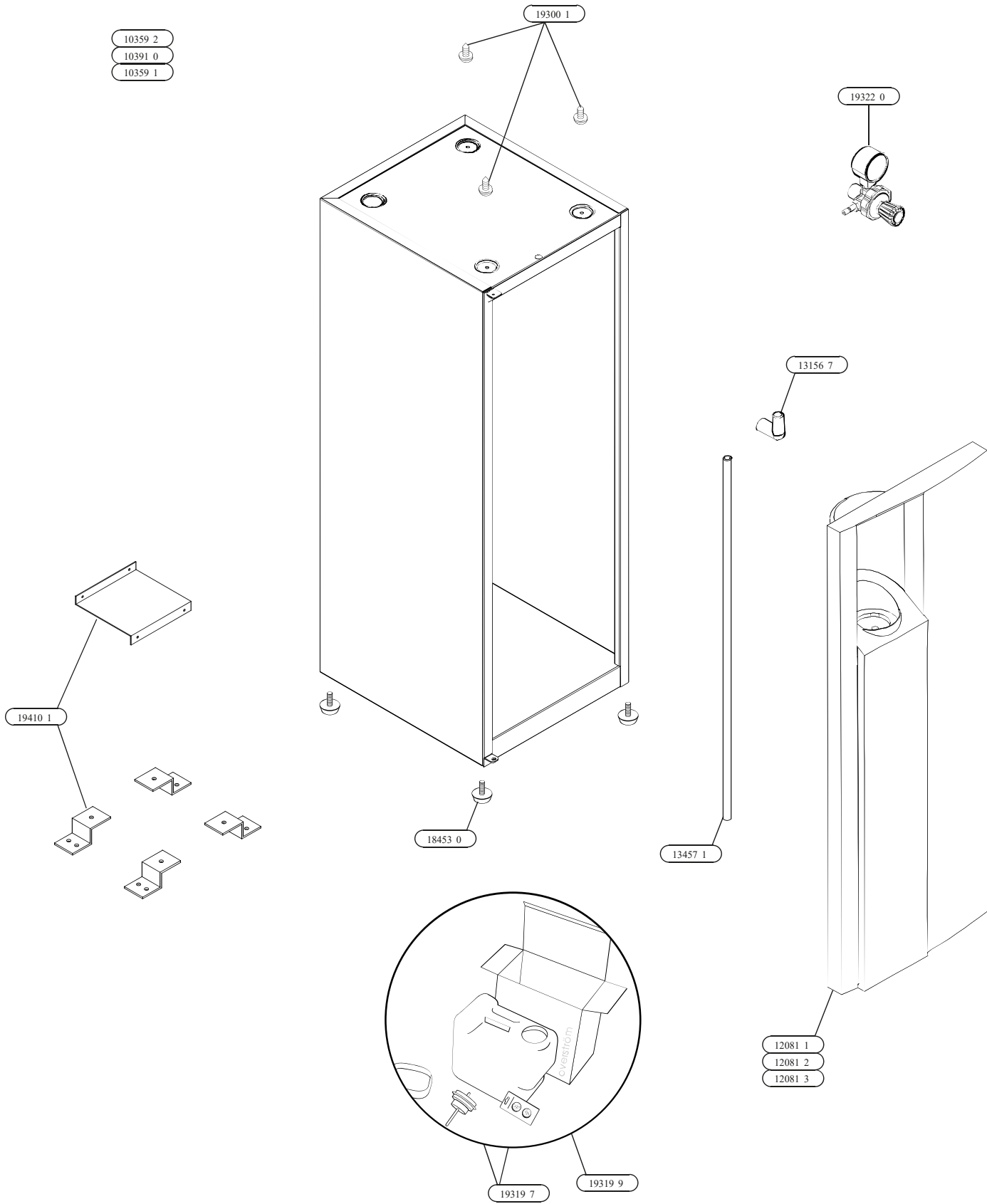
Part number: ◆	Description:	◆	◆
132445	Single Check Valve		<a href="#">View in store</a>
174391	24vdc Carbonation Pump Transformer		<a href="#">View in store</a>
175363	Circular DC Circulation Pump		<a href="#">View in store</a>
171261	B3.2/B4.2 Chilled, Ambient & Hot/ Chilled, Hot & Sparkling Main PCB		<a href="#">View in store</a>
174313	Compressor		<a href="#">View in store</a>
171265	B3.2/B4.2 Touch Dispense Screen PCB		<a href="#">View in store</a>
172223	B3.2/B4.2 LED PCB Wiring Loom		<a href="#">View in store</a>
171269	B3.2/B4.2 Touch Icon Illumination Diffuser		<a href="#">View in store</a>
173264	Cold Temperature Thermostat		<a href="#">View in store</a>
174231	Electric Rocker Switch		<a href="#">View in store</a>
173241	HP1/4PFx1/4PFS24 Solenoid Valve		<a href="#">View in store</a>
172163	IEC Fused Socket		<a href="#">View in store</a>
174351	Cooling Fan		<a href="#">View in store</a>
173255	105 Hot Tank Over-heat cut out		<a href="#">View in store</a>
173266	92 Hot Tank Thermostat Sensor		<a href="#">View in store</a>
183246	Chrome B3.2/B4.2 Faucet Shroud		<a href="#">View in store</a>
191006	B4.2 Chilled, Hot & Sparkling Touch Control Panel		<a href="#">View in store</a>
123187	Top Cover Panel		<a href="#">View in store</a>
133514	Faucet 4 outlets		<a href="#">View in store</a>
171268	B3.2/B4.2 Main PCB Case Assembly		<a href="#">View in store</a>
120802	B4.2 Front Panel - Black		<a href="#">View in store</a>
120800	B4.2 Front Panel - Silver		<a href="#">View in store</a>
120801	B4.2 Front Panel - White		<a href="#">View in store</a>
131426	2-Port Drainage Outlet		<a href="#">View in store</a>
120803	B4.2 Upper Front Panel		<a href="#">View in store</a>
125839	B4.2 Drip Tray Set with drainage - Black		<a href="#">View in store</a>

Part number: ◆	Description:	◆	◆
125840	B4.2 Drip Tray Set without drainage - Black		<a href="#">View in store</a>
121850	B4 Left Side Panel inc handle		<a href="#">View in store</a>
121851	B4 Right Side Panel inc handle		<a href="#">View in store</a>
134566	Straight Type Silicon Tube		<a href="#">View in store</a>
166986	166986 Hot Tank		<a href="#">View in store</a>
193220	CO2 Regulator with gauge c/w elbow		<a href="#">View in store</a>
172144	Power Cord Set - Danish		<a href="#">View in store</a>
172148	Power Cord Set - Schuko/EURO		<a href="#">View in store</a>
852108	Power Cord Set - Swiss		<a href="#">View in store</a>
172152	Power Cord Set - UK		<a href="#">View in store</a>
134612	Pressure Release Valve for Carbonation Tank		<a href="#">View in store</a>
174372	B3.2/B4.2 Carbonation Pump 24VDC		<a href="#">View in store</a>
462325	Bulkhead 1/4" Push-Fit Connector		<a href="#">View in store</a>
194121	Grit Filter		<a href="#">View in store</a>

Showing 1 to 40 of 40 entries
















# Base Unit Exploded Diagram

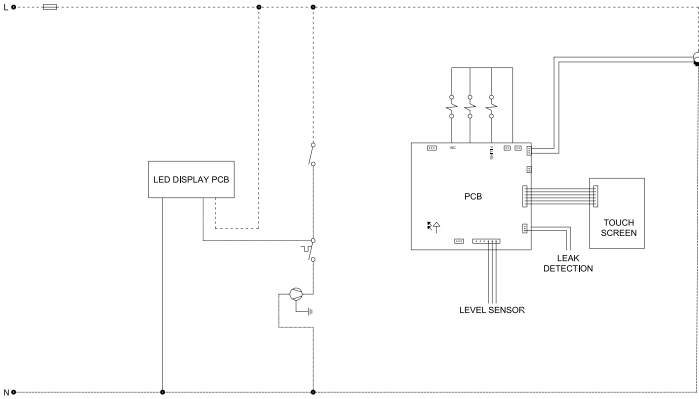


# Technical Information














## Chilled & Ambient Electrical Circuit Diagram

KEY	
	CONDENSER FAN
	TEMPERATURE PROBE
	FAN
	COMPRESSOR
	TRANSFORMER
	SWITCH
	SOLENOID
	FUSE
	PUMP
	BRIDGE DIODE
	TEMPERATURE SWITCH
	HOT WATER TANK
	LED

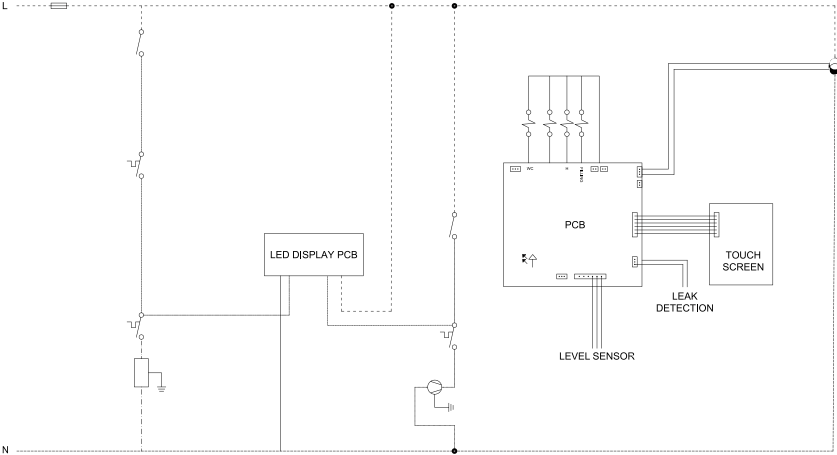
	BLACK
	PURPLE
	BROWN
	BLUE
	WHITE
	YELLOW
	ORANGE
	RED



# Chilled, Ambient & Hot Electrical Circuit Diagram

KEY	
	CONDENSER FAN
	TEMPERATURE PROBE
	FAN
	COMPRESSOR
	TRANSFORMER
	SWITCH
	SOLENOID
	FUSE
	PUMP
	BRIDGE DIODE
	TEMPERATURE SWITCH
	HOT WATER TANK
	LED

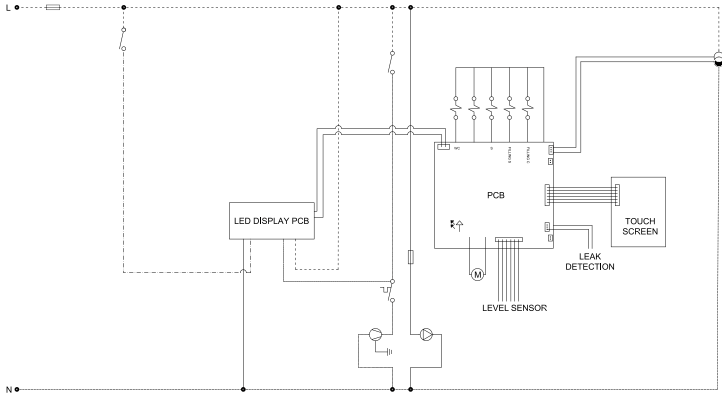
	BLACK
	PURPLE
	BROWN
	BLUE
	WHITE
	YELLOW
	ORANGE
	RED



# Chilled, Ambient & Sparkling Electrical Circuit Diagram















- KEY**
- CONDENSER FAN
  - TEMPERATURE PROBE
  - FAN
  - COMPRESSOR
  - TRANSFORMER
  - SWITCH
  - SOLENOID
  - FUSE
  - PUMP
  - BRIDGE DIODE
  - TEMPERATURE SWITCH
  - HOT WATER TANK
  - LED
  - MOTOR

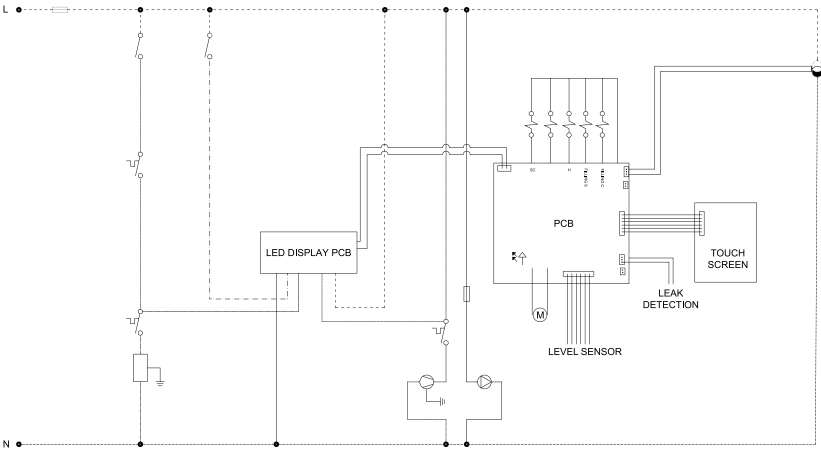
- BLACK
- PURPLE
- BROWN
- BLUE
- WHITE
- YELLOW
- ORANGE
- RED



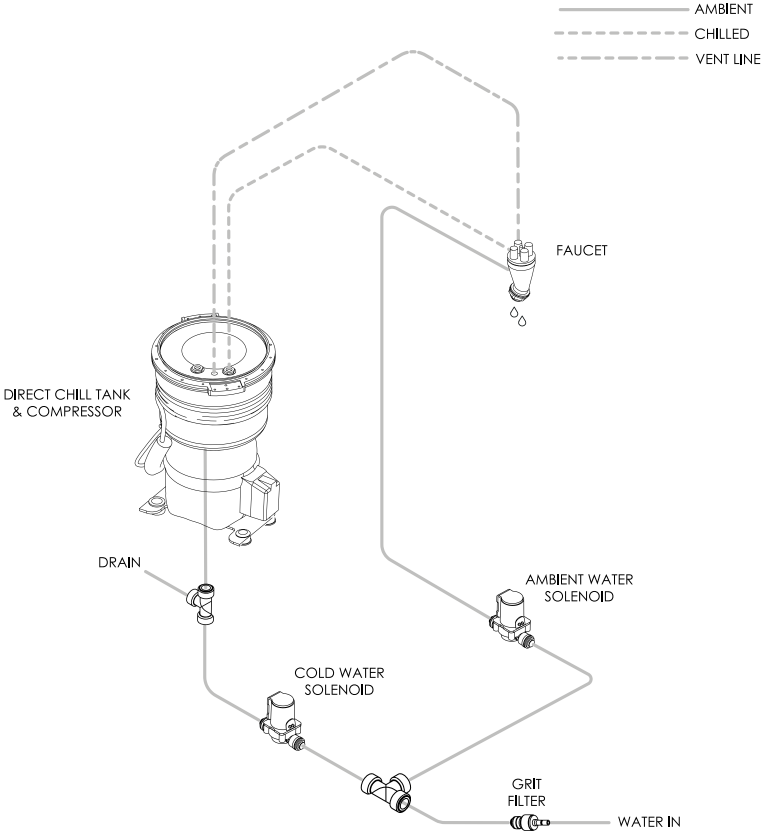
# Chilled, Hot & Sparkling Electrical Circuit Diagram

**KEY**

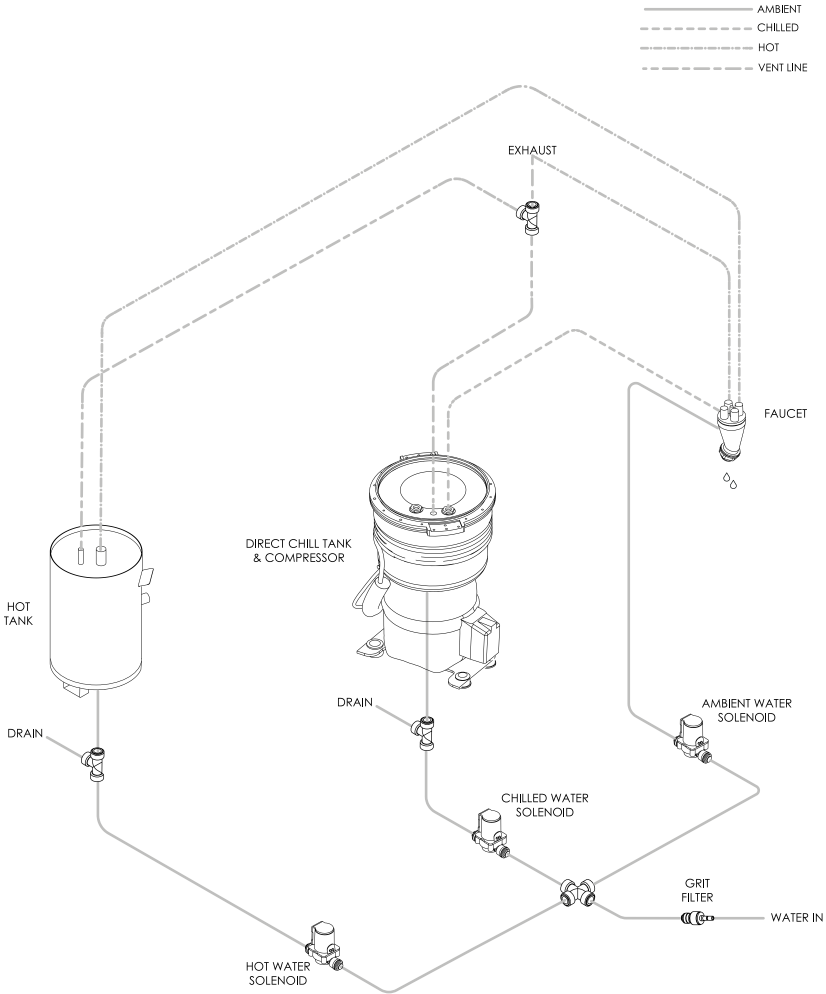
	CONDENSER FAN		BLACK
	TEMPERATURE PROBE		PURPLE
	FAN		BROWN
	COMPRESSOR		BLUE
	TRANSFORMER		WHITE
	SWITCH		YELLOW
	SOLENOID		ORANGE
	FUSE		RED
	PUMP		
	BRIDGE DIODE		
	TEMPERATURE SWITCH		
	HOT WATER TANK		
	LED		
	OTOR		



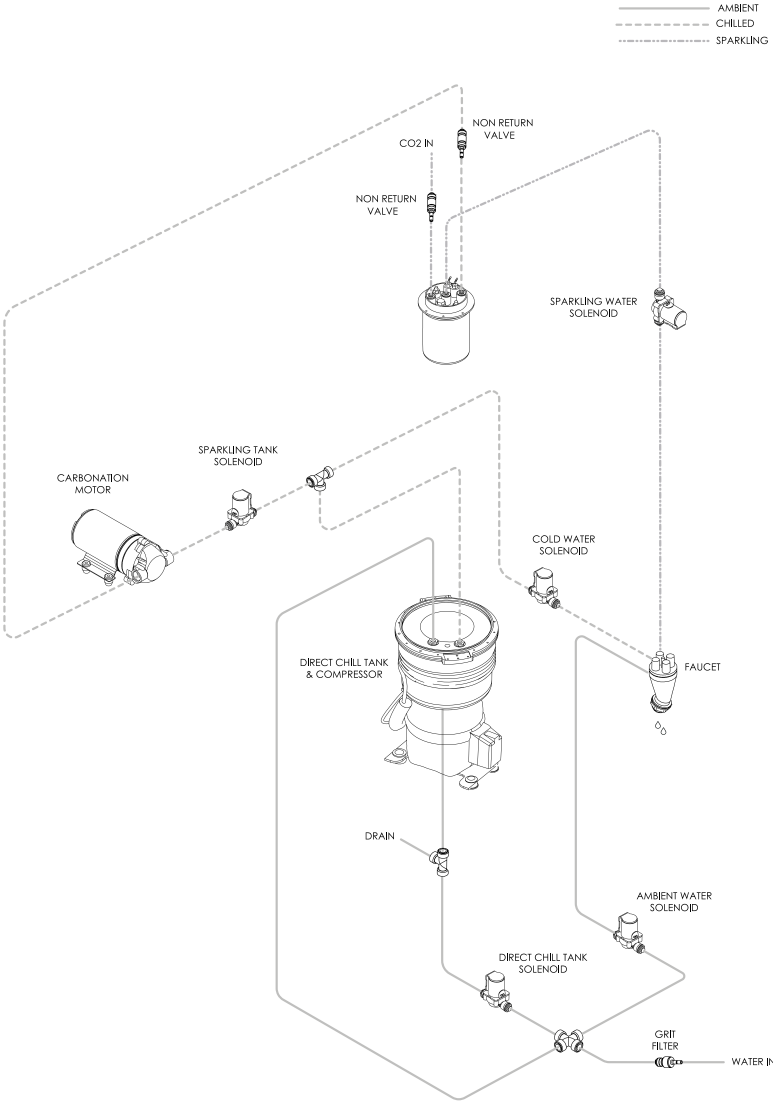
# Chilled & Ambient Water Pathway Diagram



# Chilled, Ambient & Hot Water Pathway Diagram

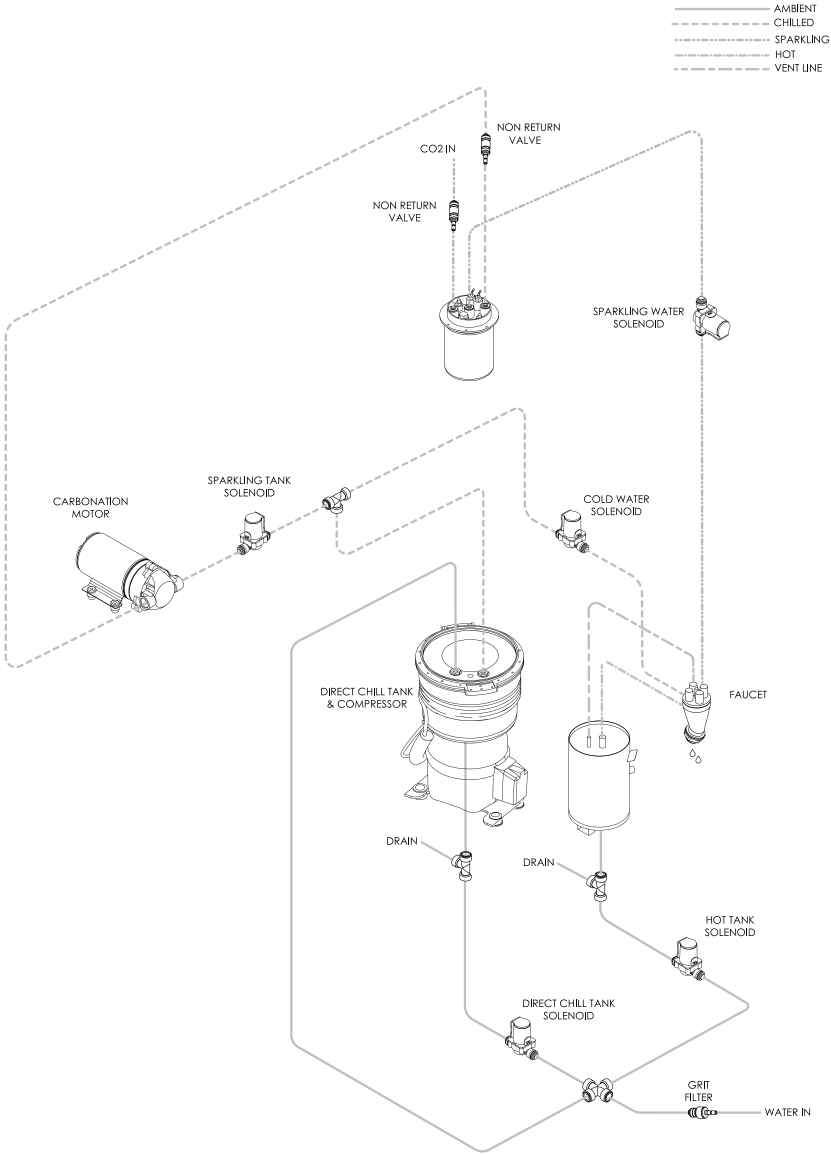


# Chilled, Ambient & Sparkling Water Pathway Diagram





# Chilled, Hot & Sparkling Water Pathway Diagram



# Specification

<b>COOLING SYSTEM</b>	All Models	High efficiency compression system with capillary control. Premium quality long life hermetic compressor. Compact internal condenser - fan assisted for greater efficiency. Environmentally friendly R600 refrigerant.
	Chilled & Ambient	High volume 3.5 litre stainless steel pressurised cold tank for optimum water capacity on demand and hygiene. Low sanitisation and maintenance. Insulated tank for energy conservation. Large volume output performance via high pressure valves. Thermostatically controlled chilled water temperature (range down to 1°C minimum).
	Chilled, Ambient & Sparkling	3.5 litre stainless steel chiller tank with level control containing stainless steel cold water direct chill coil. Stainless steel carbonator tank with independent level control fitted inside coil. High capacity, low voltage diaphragm inlet pump.
<b>HEATING SYSTEM</b>	Chilled, Ambient & Hot	High volume 3.5 litre stainless steel pressurised cold tank for optimum water capacity on demand and hygiene with low sanitisation and maintenance requirement. Thermostatically controlled chilled water temperature (range down to 1°C minimum). 1.75lt stainless steel hot water tank with thermostatic temperature control (92C max). Insulated tanks for energy conservation. Large volume output performance via high pressure solenoid valves.
	Chilled, Hot & Sparkling	3.5 litre stainless steel chiller tank with level control containing stainless steel cold water direct chill coil. Thermostatically controlled chilled water temperature (range down to 1°C minimum). Stainless steel carbonator tank with independent level control fitted inside coil and high capacity, low voltage diaphragm inlet pump. 1.75lt stainless steel hot water tank with thermostatic temperature control (92C max). Insulated tanks for energy conservation. Large volume output performance via high pressure solenoid valves.
<b>COLD TEMPRATURE</b>		2°C to 11°C
<b>HOT TEMPRATURE</b>		92°C Max
<b>THROUGHPUT PER HOUR</b>		18 litres cold < 12°C / 16 litres sparkling <12°C
<b>DISPENSE</b>		Ergonomically designed and situated light touch sensitive controls.
<b>MAXIMUM RUNNING POWER CONSUMPTION</b>	Chilled & Ambient	100 watt
	Chilled & Hot	600 watt

Chilled &  
Sparkling

140 watt

Chilled, Hot &  
Sparkling

640 watt

---

**POWER SUPPLY**

IEC power socket.

---

**REFRIGERANT**

All models

R600a (18g)

---

**WATER CONNECTION**

1/4 inch quick connection.

---

**CO2 CONNECTION**

1/4 inch quick connection.

---

**COUNTERTOP  
DIMENSIONS**

(w x d x h) 320 x 440 x 415mm

---

**(INCLUDING BASE  
CABINET)**

(w x d x h) 1325 x 440 x 415mm

---

**WEIGHTS**

Chilled &  
Ambient

14.5kg

---

Chilled & Hot

16.2kg

---

Chilled &  
Sparkling

21.0kg

---

Chilled, Hot &  
Sparkling

22.9kg